

PROJECT DESIGN TEAM:

ARCHITECTS

ARCHITECT GROUP ARCHITECTS
550 SOUTH FEDERAL HIGHWAY, F.T.
P.O. BOX 15248-15353 F.T. LAUDERDALE, FL 33315-1535
E-MAIL: info@archgroup.com
TEL: 954-463-0000
FAX: 954-463-0001

CREATIVE DESIGNER

MANCHESTER CENTER, VT. 05255
E-MAIL: info@manchestercenter.com
TEL: 802-253-1111
FAX: 802-253-1112

M.E.P. ENGINEER

TYR ENGINEERS
600 S. DIXIE AND BLVD
P.O. BOX 970000 F.T. LAUDERDALE, FL 33309
E-MAIL: info@tyr-engineers.com
TEL: 954-463-0000
FAX: 954-463-0001

STRUCTURAL ENGINEER

TYR ENGINEERS
600 S. DIXIE AND BLVD
P.O. BOX 970000 F.T. LAUDERDALE, FL 33309
E-MAIL: info@tyr-engineers.com
TEL: 954-463-0000
FAX: 954-463-0001

CIVIL ENGINEER

CONSULTING ENGINEERING & SCIENCE, INC.
10700 REEF BLVD, SUITE 400
F.T. LAUDERDALE, FL 33309
TEL: 954-463-0000
FAX: 954-463-0001

OWNER:

MARGARITAVILLE HOLLYWOOD
BEACH RESORT, LLC
3501 N. OCEAN DRIVE
HOLLYWOOD, FLORIDA 33019



SEAL:

ISSUED FOR: TAC REVIEW

DATE: 9/03/2010

REVISIONS:

No. DATE REMARKS

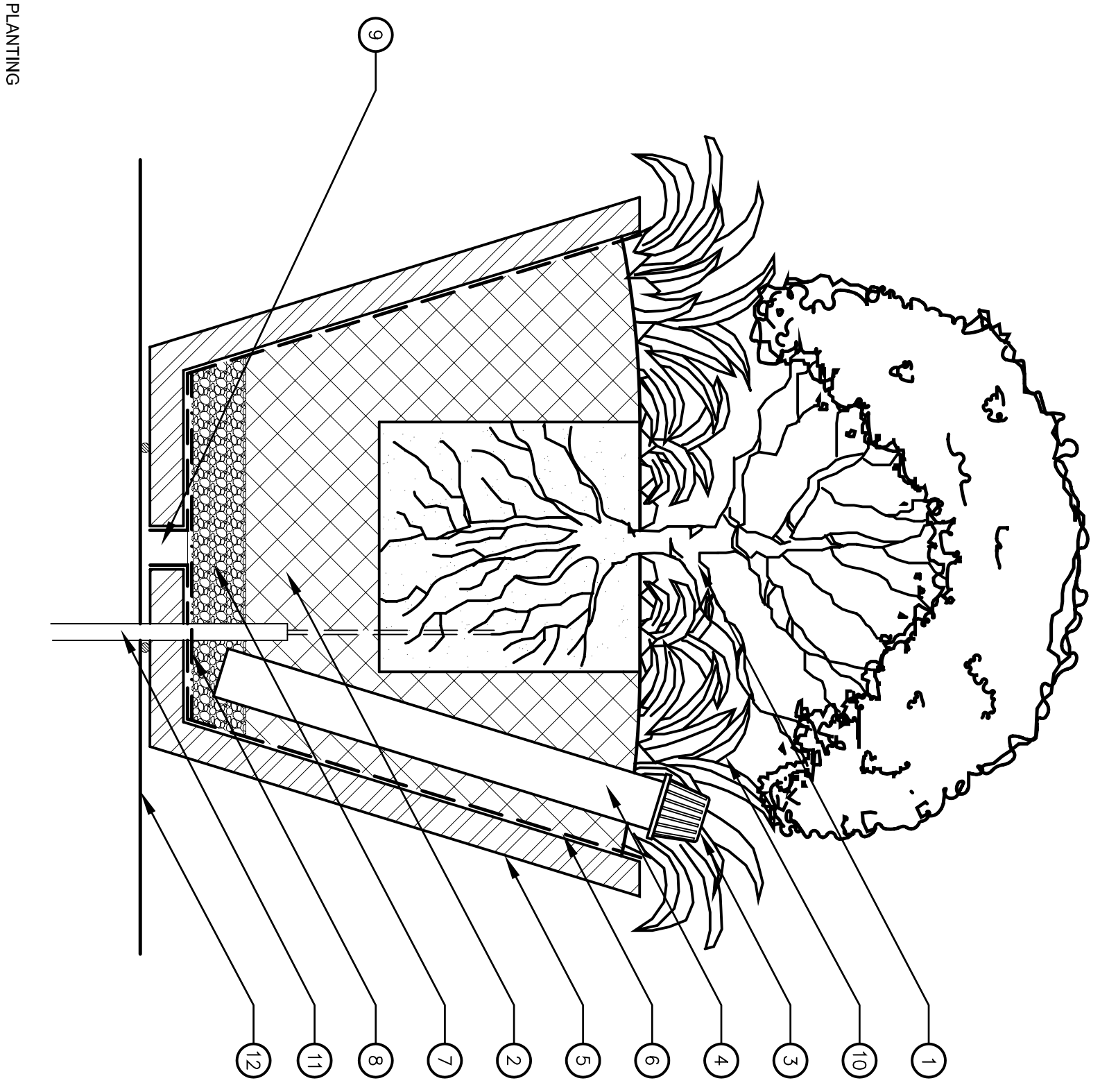
SHEET TITLE:
LANDSCAPE
PLANT MATERIAL DETAILS

ALL DESIGNS, ARRANGEMENTS, PLANS AND SPECIFICATIONS INDICATED OR REPRESENTED BY THIS DRAWING ARE OWNED BY AND THE PROPERTY OF ARCHITECT GROUP ARCHITECTS AND SHALL REMAIN THE PROPERTY OF ARCHITECT GROUP ARCHITECTS AND SHALL NOT BE REPRODUCED OR USED IN ANY MANNER WITHOUT THE WRITTEN PERMISSION OF ARCHITECT GROUP ARCHITECTS. ANY PERSON, CORPORATION OR FIRM FOR ANY PURPOSE WHATSOEVER WITHOUT THE WRITTEN PERMISSION OF ARCHITECT GROUP ARCHITECTS SHALL BE IN VIOLATION OF THESE RESTRICTIONS. ALL RIGHTS RESERVED. © 2010
FLORIDA LICENSE # AR0007073

DATE: 9/03/2010
SCALE: AS NOTED
DRAWN BY: MM
CHECKED BY: DA
JOB NO.: 10046

SHEET NO.:
L2.01

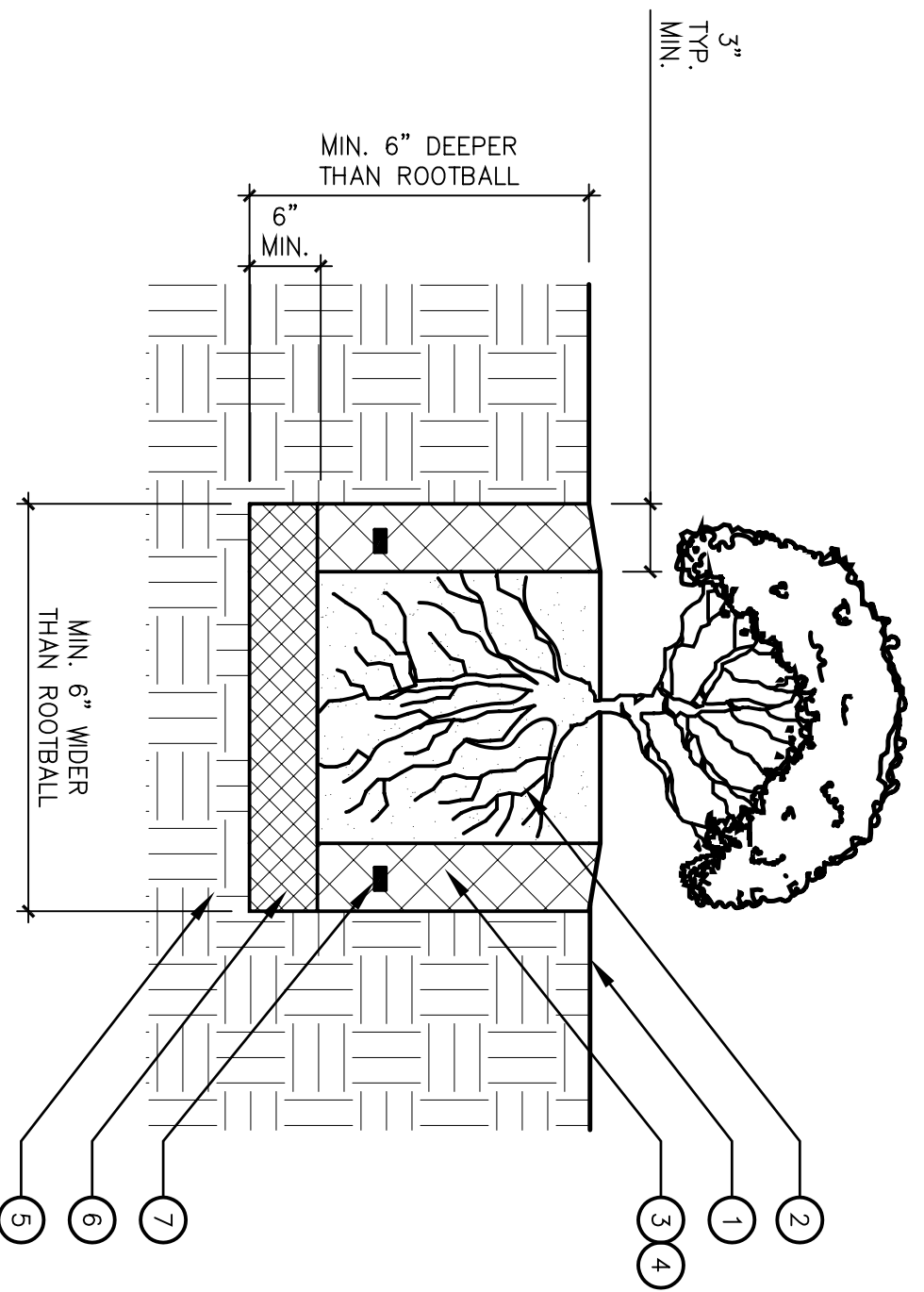
- 1 PRIMARY PLANT - INSTALL ROOTCROWN 1" ABOVE RIM OF POT
- 2 PLANTING BACKFILL MIX - EQUAL PARTS WOOD SHAVINGS & WASHED CONCRETE SAND
- 3 INSTALL ALUMINUM GRATE OR P.V.C. SLIP CAP ON TOP OF INSPECTION PIPE
- 4 INSTALL 3" DIA. PERFORATED INSPECTION DRAINPIPE (ASTM D2729) TO EXTEND FROM TOP OF POT INTO PEA GRAVEL AS SHOWN. WRAP W/ FILTER FABRIC
- 5 POTTERY - REFER TO CONSTRUCTION PLANS
- 6 WATERPROOFING ON INSIDE OF POTTERY - AS REQUIRED
- 7 3" DEEP LAYER OF CLEAN PEA GRAVEL (3") ON BOTTOM OF POT
- 8 INSTALL FILTER FABRIC ON BOTTOM OF POT
- 9 2" DIA. HOLE IN BOTTOM OF POT - INSTALLED BY LANDSCAPE CONTRACTOR. CONTRACTOR TO CAULK BASE OF POT TO PREVENT DRAIN WATER FROM SPLILING ONTO DECK SURFACE
- 10 SECONDARY PLANTING OR COBBLE - REFER TO PLANTING PLANS - SHRUBS
- 11 IRRIGATION CONDUIT TO POT - REFER TO IRRIGATION PLANS & DETAILS.
- 12 SEAL OPENING AROUND PIPE
- 13 ADJACENT FINISH SURFACE - REFER TO CONSTRUCTION PLANS



POTTERY PLANTING

SCALE: 1-1/2" = 1'-0"

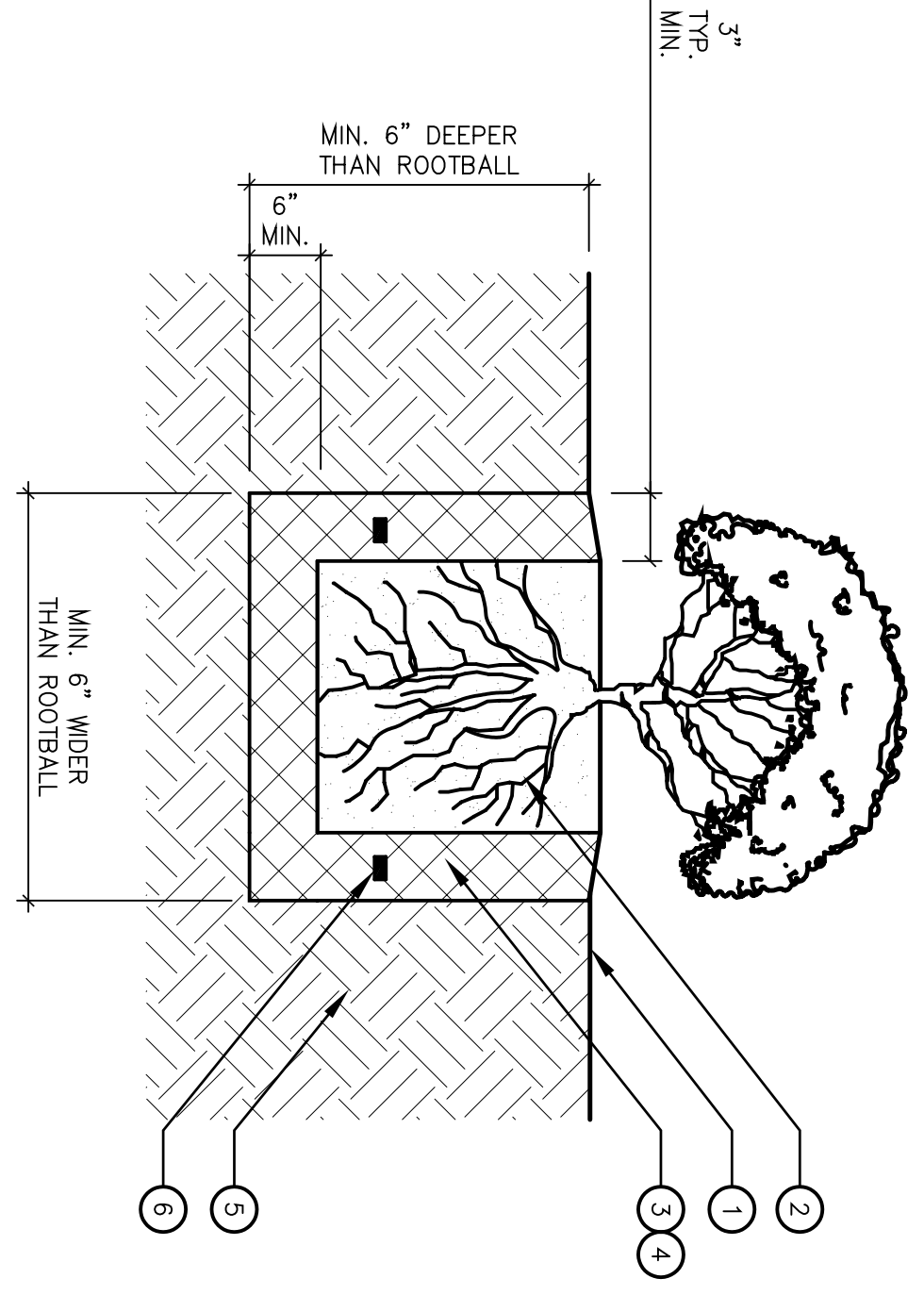
- 1 FINISH GRADE IN PLANTING AREA
- 2 PLANT ROOTBALL
- 3 BACKFILL PLANTING MIX PER PLANTING SPECIFICATIONS
- 4 LEFT BACKFILL PLANTING MIX WITH WATER TO ELIMINATE VOIDS
- 5 NATIVE SOIL
- 6 COMPACTED BACKFILL PLANTING MIX PER PLANTING SPECIFICATIONS
- 7 PLANT FERTILIZER TABS - QUANTITY PER MANUFACTURERS SPECIFICATIONS. PLACE TABS IN PLANT CONTAINER PRIOR TO PLANTING FOR REVIEW BY LANDSCAPE ARCHITECT.



SHRUB PLANTING ON GRADE

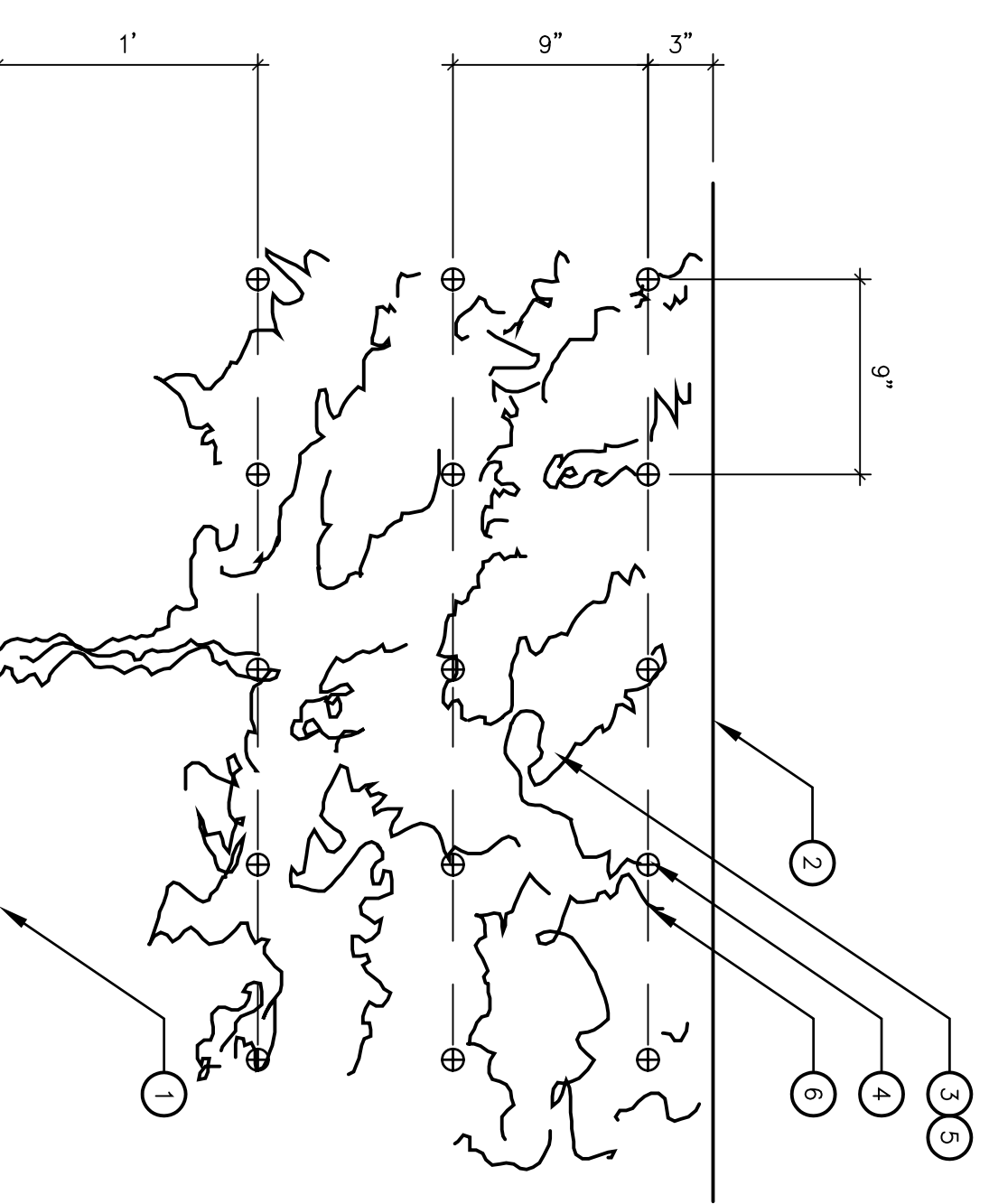
SCALE: 1-1/2" = 1'-0"

- 1 FINISH GRADE IN PLANTING AREA
- 2 PLANT ROOTBALL
- 3 BACKFILL PLANTING MIX WITH LIGHTWEIGHT PLANTING MIX PER PLANTING SPECIFICATIONS
- 4 LEFT BACKFILL PLANTING MIX WITH WATER TO ELIMINATE VOIDS
- 5 LIGHTWEIGHT PLANTING MIX PER PLANTING SPECIFICATIONS
- 6 PLANT FERTILIZER TABS - QUANTITY PER MANUFACTURERS SPECIFICATIONS. PLACE TABS IN PLANT CONTAINER PRIOR TO PLANTING FOR REVIEW BY LANDSCAPE ARCHITECT.



SHRUB PLANTING ON STRUCTURE

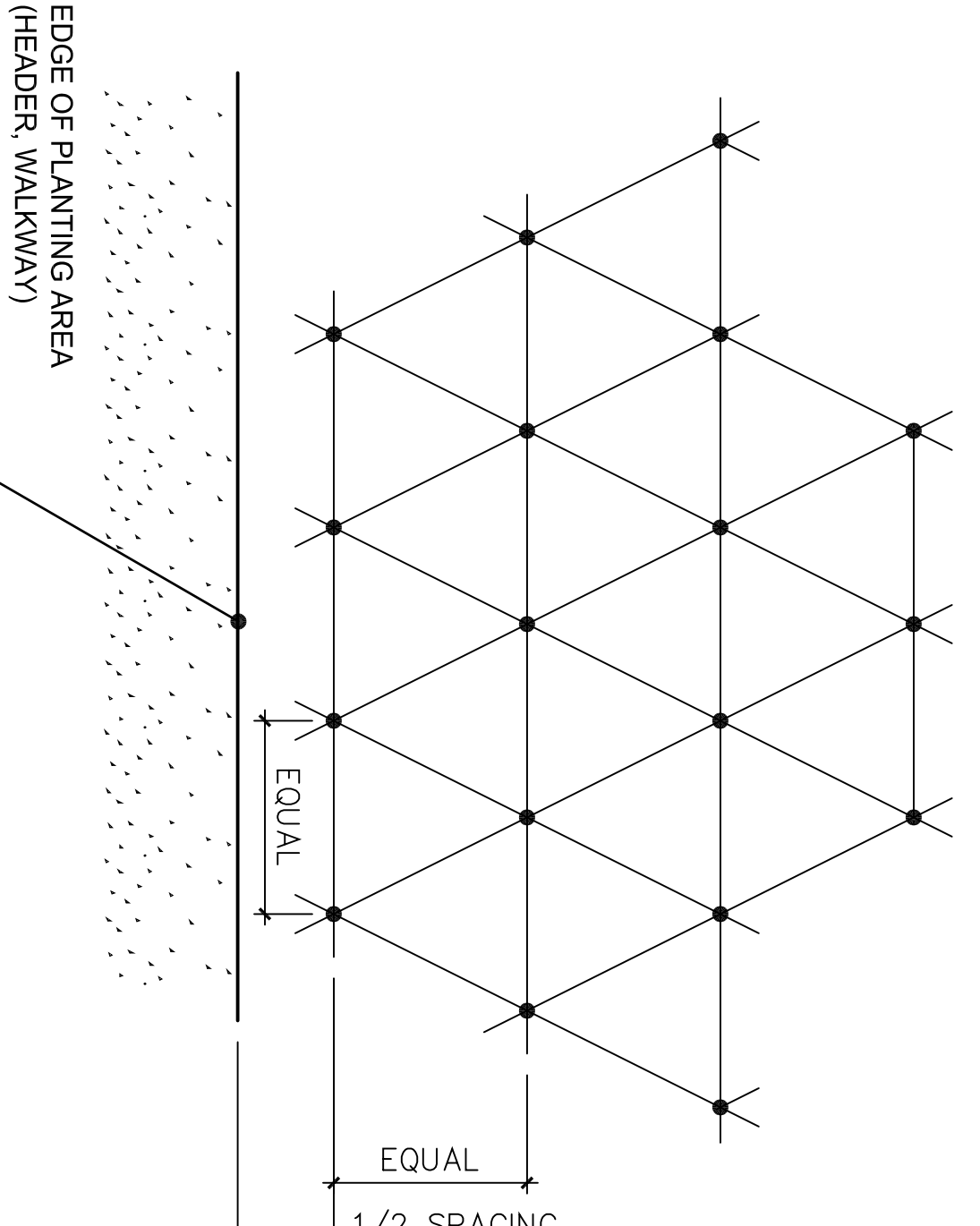
SCALE: 1-1/2" = 1'-0"



VINE PLANTING

SCALE: 1-1/2" = 1'-0"

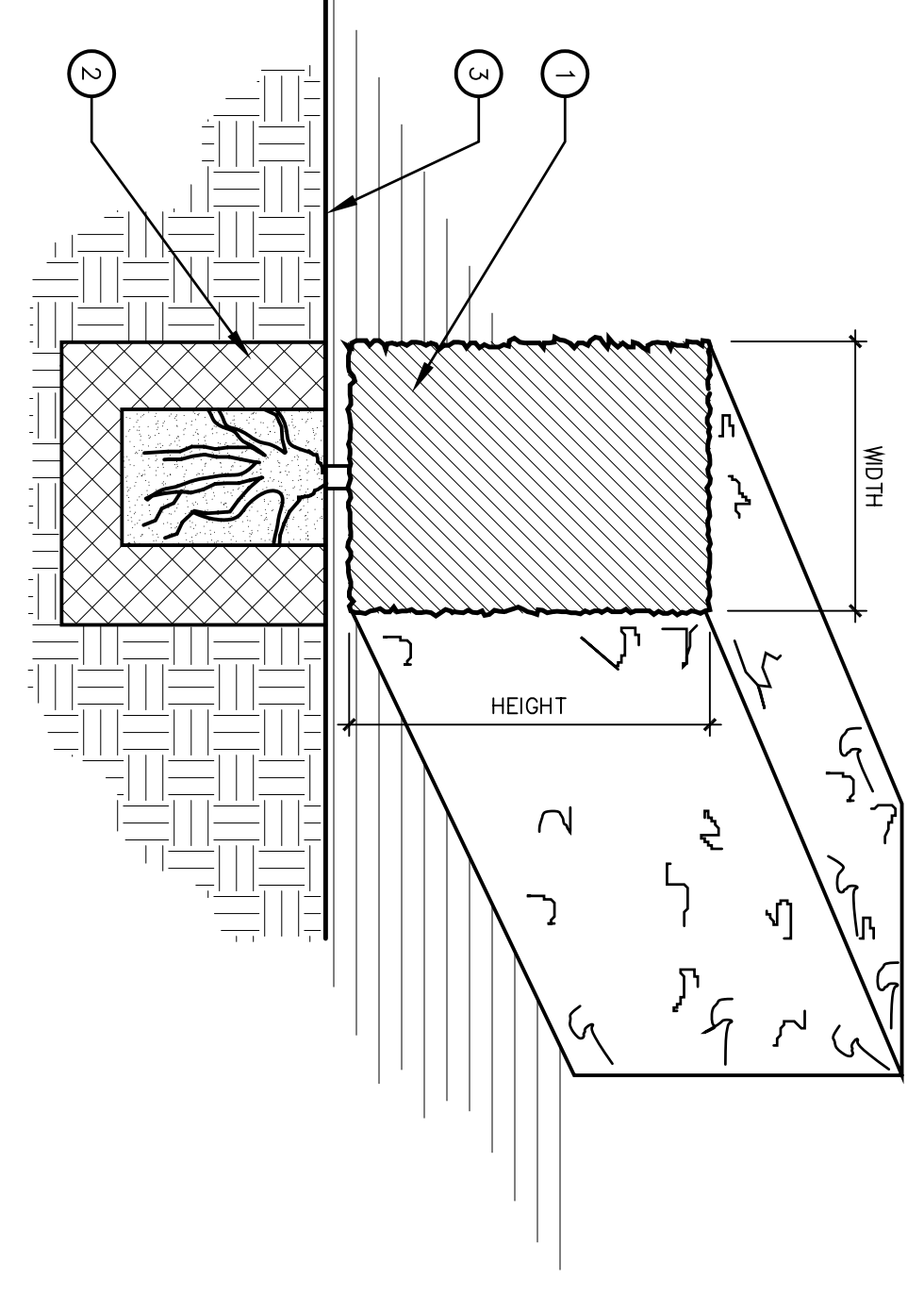
- 1 ADJACENT FINISH GRADE - REFER TO CONSTRUCTION PLANS
- 2 MASONRY WALL
- 3 VINE - REFER TO PLANTING PLANS
- 4 1" DIA EYE HOOK (PLATED, REDHEAD OR EQUAL)
- 5 REMOVE NURSERY STOCK FROM FRAME AND ATTACHED TO HOOK OR WIRE WITH 1" PLASTIC NURSERY TIE. COLOR TO BE GREEN.
- 6 9 GAUGE GALVANIZED WIRE-TIE FROM EYE HOOK TO EYE HOOK



SHRUB / GROUNDCOVER SPACING

SCALE: 3/4" = 1'

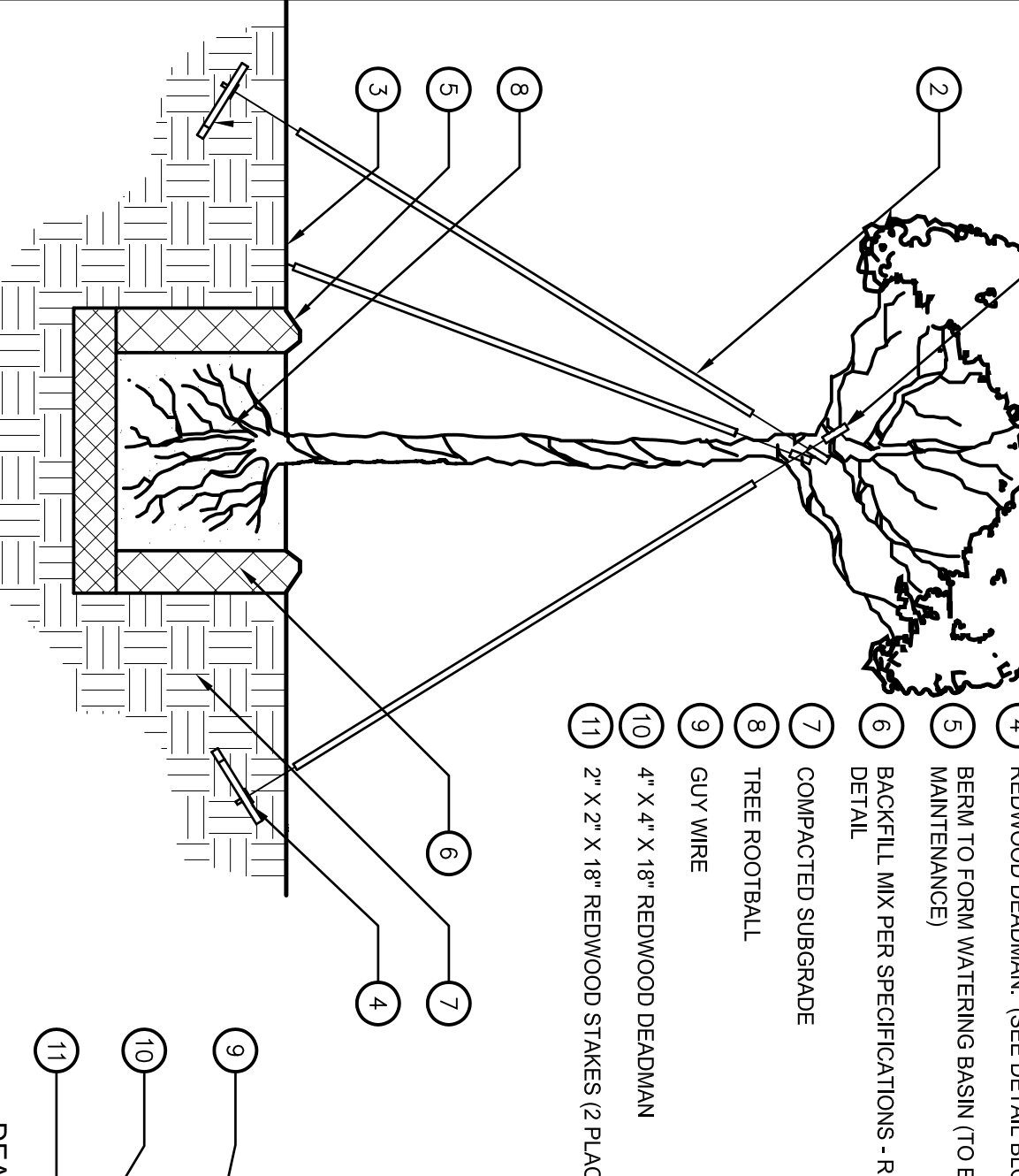
- 1 INSTALL SHRUBS FOR HEDGE IN A STRAIGHT LINE - REFER TO SHRUB LEGEND ON PLANTING PLANS.
- 2 SHRUBS FOR SPACING AT THE SPACING
- 3 SHRUB PLANTING PIT
- 4 FINISH GRADE IN PLANTING AREA



HEDGE PLANTING

SCALE: 1-1/2" = 1'-0"

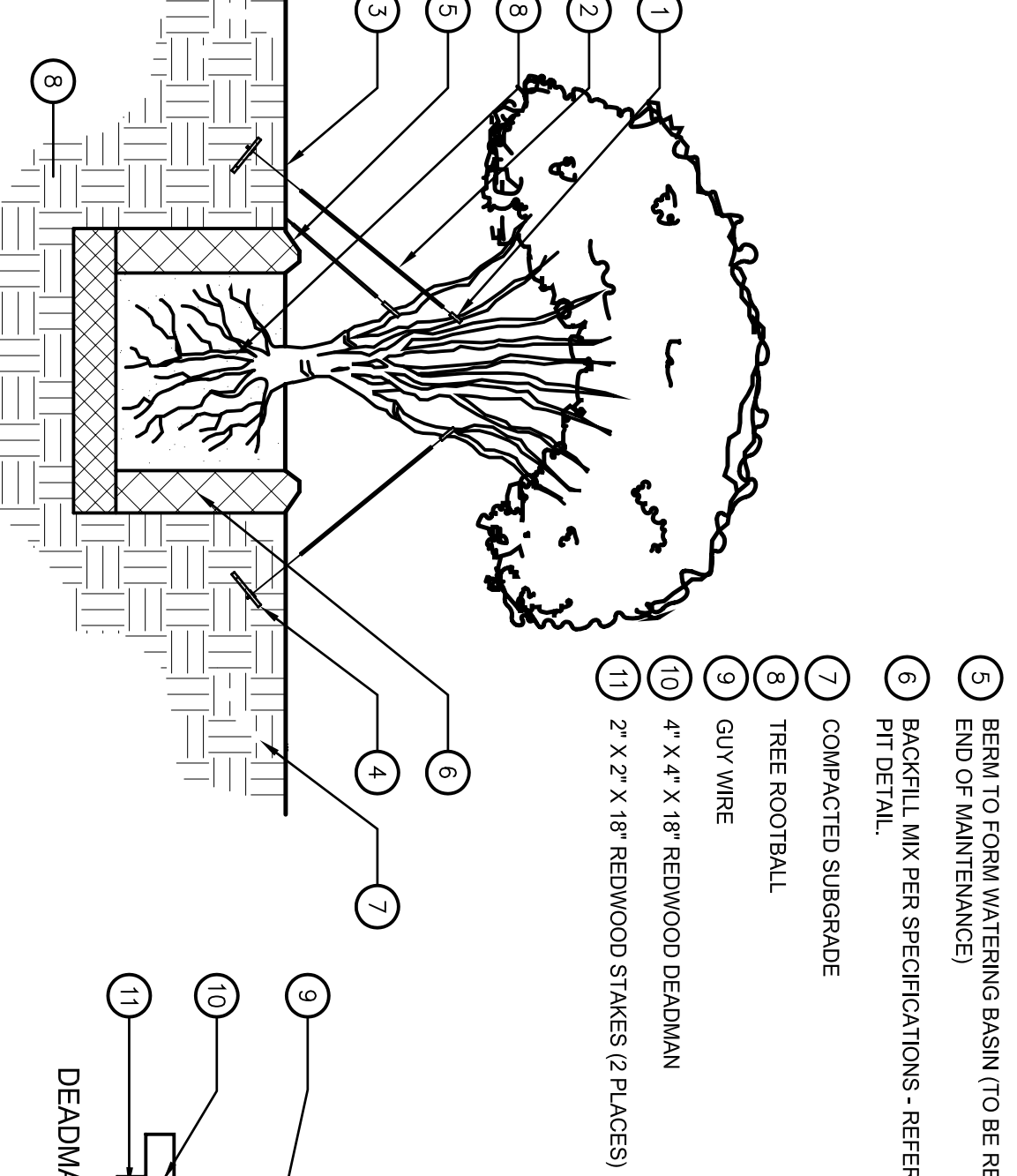
- 1 (3) TREESTRIP® TREE TIES (NO. 2024) INSTALL AT END OF WIRE AT POINT OF CONTACT WITH TREE TRUNK. (800) 360-3584.
- 2 GUY WIRES - 1/2 GAUGE GALVANIZED ANNEALED WIRE COVERED WITH RENEWOKED GREEN RUBBER GARDEN HOSE. (3) GUY SETS SPACED 180 DEGREES AROUND TREE.
- 3 FINISH GRADE IN PLANTING AREA
- 4 REDWOOD DEADMAN (SEE DETAIL BELOW)
- 5 BEND TO FORM WATERING BASIN (TO BE REMOVED PRIOR TO END OF MAINTENANCE)
- 6 BACKFILL MIX PER SPECIFICATIONS - REFER TO TREE PLANTING PIT DETAIL
- 7 COMPACTED SUBGRADE
- 8 TREE ROOTBALL
- 9 GUY WIRE
- 10 4" X 4" X 16' REDWOOD DEADMAN
- 11 2" X 2" X 16' REDWOOD STAKES (2 PLACES)



SHRUB PLANTING (ON SLOPE)

SCALE: 1-1/2" = 1'-0"

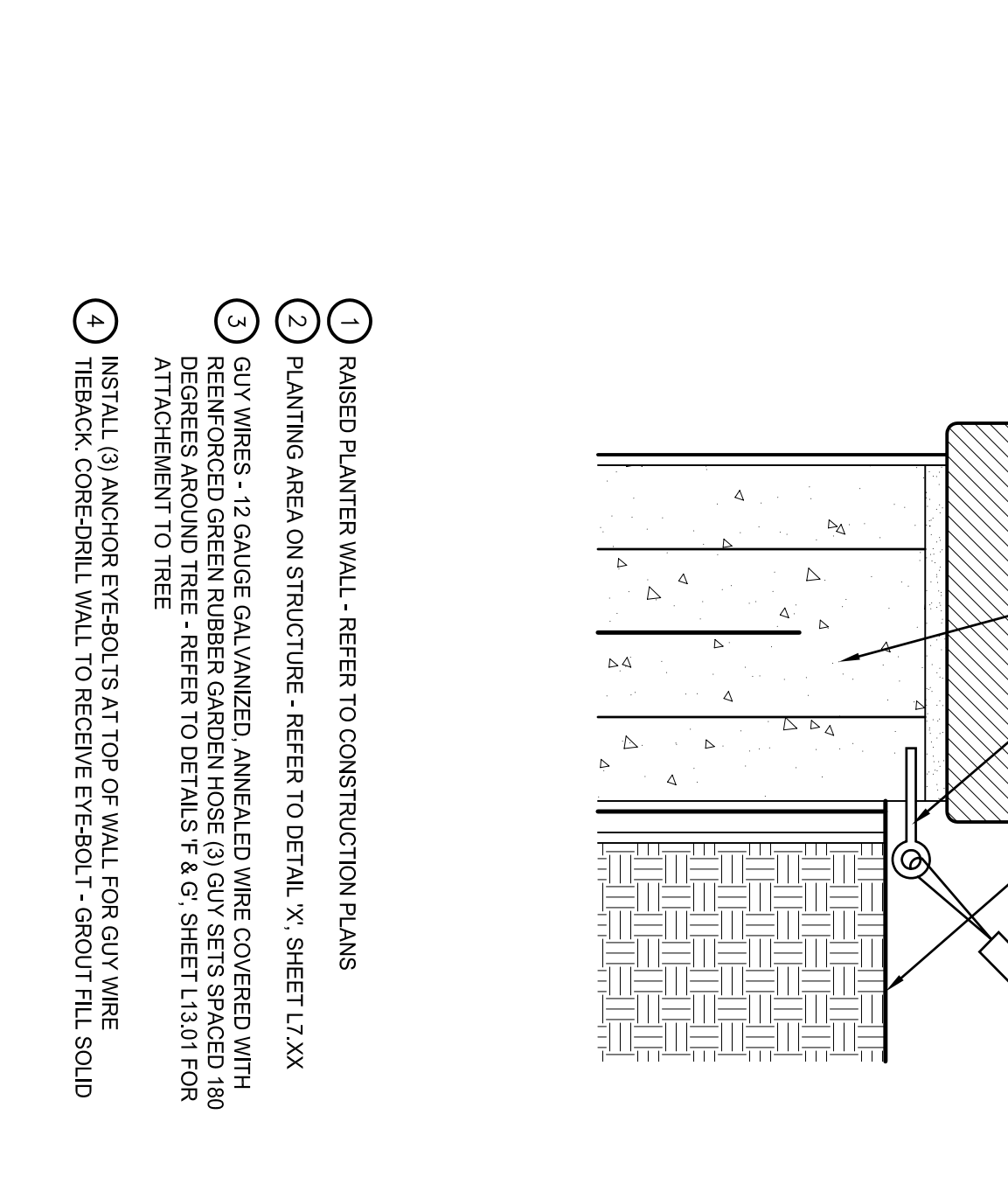
- 1 (3) TREESTRIP® TREE TIES (NO. 2024) INSTALL AT END OF WIRE AT POINT OF CONTACT WITH TREE TRUNK. (800) 360-3584.
- 2 GUY WIRES - 1/2 GAUGE GALVANIZED ANNEALED WIRE COVERED WITH RENEWOKED GREEN RUBBER GARDEN HOSE. (3) GUY SETS SPACED 180 DEGREES AROUND TREE.
- 3 FINISH GRADE IN PLANTING AREA
- 4 REDWOOD DEADMAN (SEE DETAIL BELOW)
- 5 BEND TO FORM WATERING BASIN (TO BE REMOVED PRIOR TO END OF MAINTENANCE)
- 6 BACKFILL MIX PER SPECIFICATIONS - REFER TO TREE PLANTING PIT DETAIL
- 7 COMPACTED SUBGRADE
- 8 TREE ROOTBALL
- 9 GUY WIRE
- 10 4" X 4" X 16' REDWOOD DEADMAN
- 11 2" X 2" X 16' REDWOOD STAKES (2 PLACES)



MULTI-TRUNK TREE GUYING - 36" BOX & LARGER

SCALE: 1" = 1'-0"

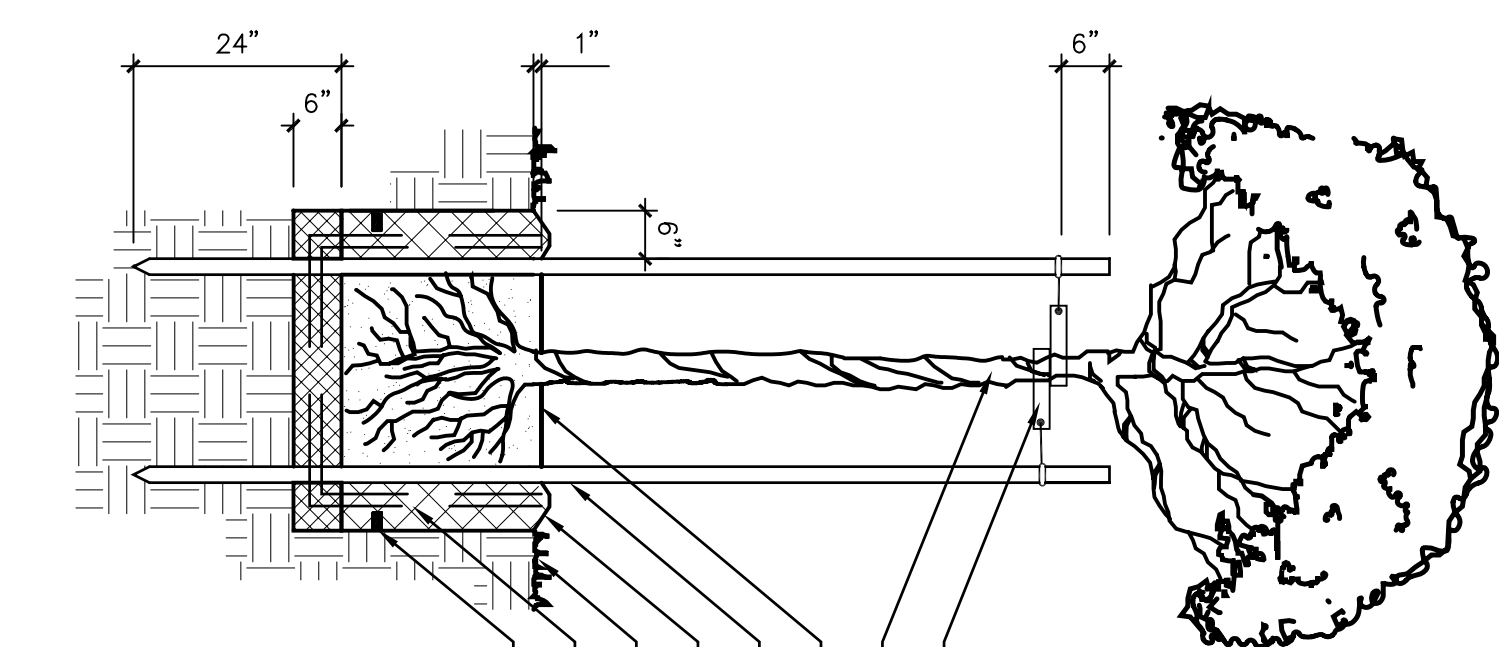
- 1 RAISED PLANTER WALL - REFER TO CONSTRUCTION PLANS
- 2 PLANTING AREA ON STRUCTURE - REFER TO DETAIL 'X' SHEET L2.XX
- 3 GUY WIRES - 1/2 GAUGE GALVANIZED ANNEALED WIRE COVERED WITH RENEWOKED GREEN RUBBER GARDEN HOSE. (3) GUY SETS SPACED 180 DEGREES AROUND TREE ATTACHMENT TO TREE
- 4 INSTALL (3) ANCHOR EYE-BOLTS AT TOP OF WALL FOR GUY WIRE TIEBACK. CORE-DRILL WALL TO RECEIVE EYE-BOLT - GROUT FILL. SLOD



TREE GUYING - ON STRUCTURE

SCALE: 3/4" = 1'-0"

- 1 MAIN TRUNK
- 2 INSTALL TWO (2) TREESTRIP® TIES TO SUPPORT TREE TRUNK. (800) 360-3584. TIE BACK TO STAKE WITH 12 GAUGE GALVANIZED ANNEALED WIRE. FASTEN TO THE STAKE WITH GALVANIZED SINGLE TAIL AS REQUIRED.
- 3 2" DIA. ROUND TREATED LODGE POLE TREE STAKES. TWO (2) POLES PER TREE. INSTALL STAKES OUTSIDE ROOTBALL SEE NOTE 'D' BELOW ON TIES IN CROSS SECTION PLANTING AREA.
- 4 FINISH GRADE IN PLANTING AREA
- 5 PLANTING BACKFILL MIX PER PLANTING SPECIFICATIONS. BEND SOIL GRADING OPERATION.
- 6 TREE ROOTBALL
- 7 PLANT FERTILIZER TABS - QUANTITY PER MANUFACTURERS SPECIFICATIONS.
- 8 INSTALL 1/2" SHAPED DRAIN PIPE SYSTEM (WITHOUT ANNEALED HOLE) AT ALL 2" BOX TREES. REFER TO TREE PLANTING PIT DETAIL THIS SHEET FOR ADDITIONAL INFORMATION.



TREE STAKING - 56", 156", 24" BOX

SCALE: 1" = 1'-0"

Drawing Name: I:\0046\CAD\DESIGN DEVELOPMENT\L2.01.dwg
Layout Name: Layout1
Plotted by: marlene
Plotted in: Sep 01, 2010 - 12:52pm
SHEET NO.:
L2.01