

PROJECT DESIGN TEAM:

**ARCHITECTS**  
ATCHE GROUP ARCHITECTS  
550 SOUTH FEDERAL HIGHWAY, F.T.  
PALM BEACH, FLORIDA 33409  
PHONE: 561-833-1333 FAX: 561-728-1159  
E-MAIL: info@atche.com

**CREATIVE DESIGNER**

ATCHE GROUP ARCHITECTS  
550 SOUTH FEDERAL HIGHWAY, F.T.  
PALM BEACH, FLORIDA 33409  
PHONE: 561-833-1333 FAX: 561-728-1159  
E-MAIL: info@atche.com

**M.E.P. ENGINEER**

TYR ENGINEERS  
600 S. DIXIE AVE. SUITE 100  
WEST PALM BEACH, FLORIDA 33411  
PHONE: 561-833-1333 FAX: 561-728-1159  
E-MAIL: info@tyr.com

**STRUCTURAL ENGINEER**

TYR ENGINEERS  
600 S. DIXIE AVE. SUITE 100  
WEST PALM BEACH, FLORIDA 33411  
PHONE: 561-833-1333 FAX: 561-728-1159  
E-MAIL: info@tyr.com

**CIVIL ENGINEER**

CONSULTING ENGINEERING & SCIENCE, INC.  
10700 REPUBLIC DRIVE, SUITE 400  
FORT LAUDERDALE, FLORIDA 33309  
PHONE: 954-777-7777 FAX: 954-777-7777

**OWNER:**

MARGARITAVILLE HOLLYWOOD  
BEACH RESORT, L.L.C.  
3501 N. OCEAN DRIVE  
HOLLYWOOD, FLORIDA 33019



**SEAL:**

ISSUED FOR: TAC REVIEW  
DATE: 9/03/2010

REVISIONS:	No.	DATE	REMARKS
------------	-----	------	---------

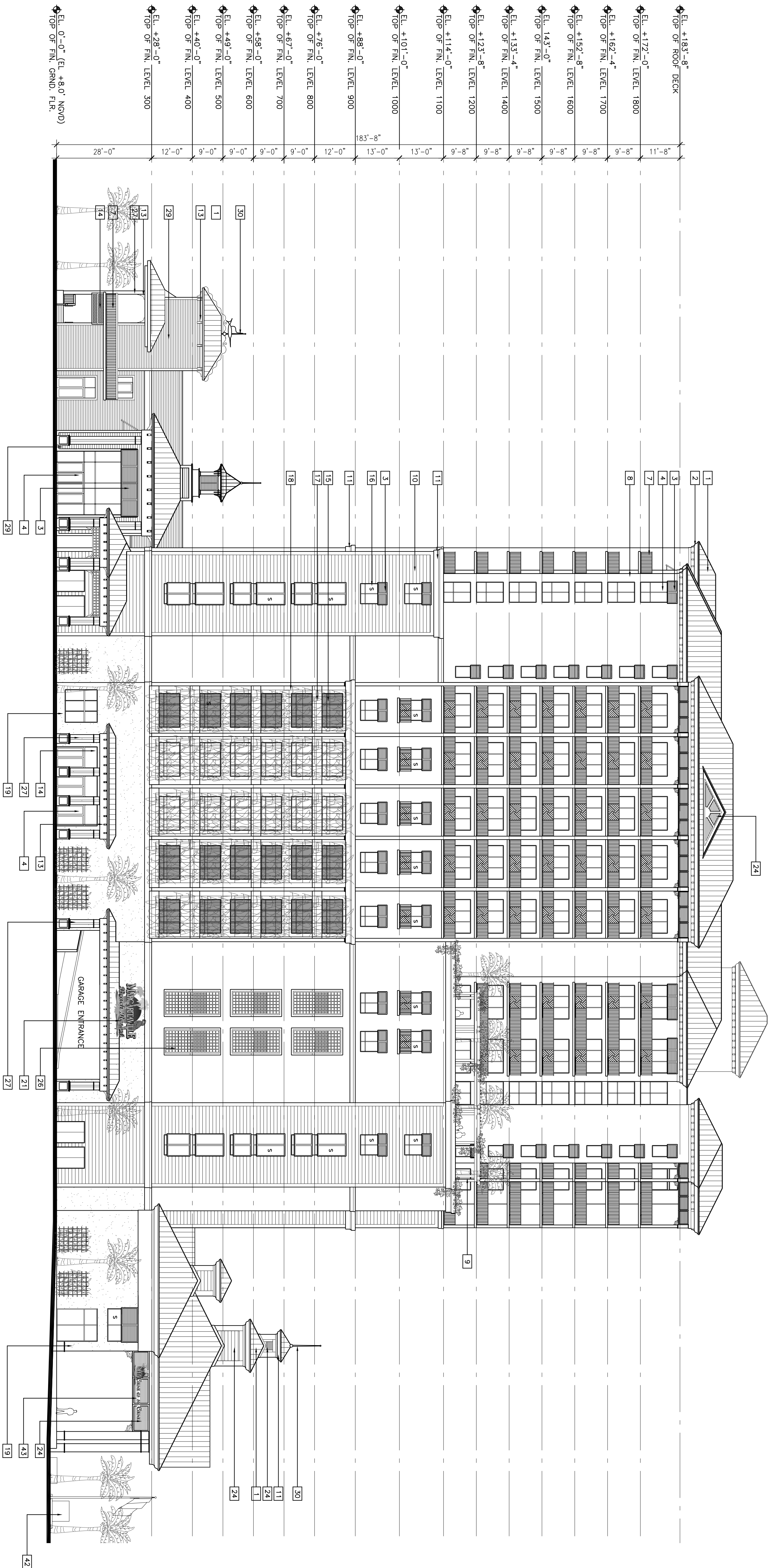
**SHEET TITLE:**  
EXTERIOR ELEVATION

ALL IDEAS, DESIGN, ARRANGEMENTS, PLANS AND SPECIFICATIONS INDICATED OR REPRESENTED BY THIS DRAWING ARE OWNED BY AND THE PROPERTY OF ATACHE GROUP ARCHITECTS, INC. AND ARE NOT TO BE REPRODUCED, COPIED, REPRODUCED, OR USED IN ANY MANNER WITHOUT THE WRITTEN PERMISSION OF ATACHE GROUP ARCHITECTS, INC. FOR ANY PERSON, CORPORATION OR FIRM FOR ANY PURPOSE WHATSOEVER WITHOUT THE WRITTEN PERMISSION OF ATACHE GROUP ARCHITECTS, INC. VISUAL CONTACT WITH THESE PLANS OR SPECIFICATIONS SHALL CONSTITUTE CONCLUSIVE EVIDENCE OF ADMISSION OF THESE RESTRICTIONS. FLORIDA LICENSE #AR007073

DATE: 1/16/11-0"  
DRAWN BY: JR  
CHECKED BY: JB  
JOB NO.: 94.08A

SHEET NO.:

A-2.1.04



**GENERAL NOTES:**

- 1) CHAPTER 168-55.002 OF THE FLORIDA STATUTES DEMANDS THAT ALL GLASS USED IN BUILDINGS BE MANUFACTURED TO ACHIEVE AN INDUSTRY APPROVED, INSIDE TO OUTSIDE LIGHT TRANSMITTANCE VALUE OF 45% OR LESS. THIS IS NOT THE SAME AS THE GLASS SHADING COEFFICIENT. FOR EXAMPLE, FROSTED GLASS WITH A TRANSMITTANCE OF 44%, HOWEVER ITS SHADING COEFFICIENT IS 0.66.
- 2) ANY EXTERIOR METAL FINISH FOR ANY PART OF THE BUILDING ENVELOPE SHALL MEET LARGE MISSILE IMPACT LOWER THAN 30" HIGH AND SMALL MISSILE IMPACT GREATER THAN 30" HIGH.
- 3) PROVIDE LARGE IMPACT WINDOWS WHERE THERE IS A DROP OF MORE THAN 4'-0" ON THE FAR SIDE OF SUCH WINDOWS AND THE TO ACT AS SAFEGUARD TO PREVENT THE FALL OF PERSONS WHEN SUCH WINDOWS ARE OPEN.
- 4) ALL OPERABLE WINDOWS TO HAVE SILLS MINIMUM 36" A.F.F.
- 5) ALL BALCONIES TO HAVE (SAFEGUARDS) RAILINGS 42" HIGH A.F.F.
- 6) 5" ON ELEVATION INDICATED SPANDREL GLASS.

**ELEVATION KEY NOTES:**

- |  |  |   |  |  |
|--|--|---|--|--|
| 1) STANDING SEAM METAL ROOF. SEE A-2.1.03 FOR COLOR.                         | 10) TOILED SMOOTH STUCCO LAP SIDING. COLOR: WHITE. SEE COLOR SWATCH. | 19) TABBY COQUINA SHELL STUCCO. COLOR. SEE COLOR SWATCH.              | 28) WHITE ALUMINUM PASCOA HARD PLANK LAP SIDING. COLOR: WHITE. SEE COLOR SWATCH. | 37) CLEAR ANODIZED ALUMINUM DECORATIVE SHIP MAST.  |
| 2) WHITE ARCHITECTURAL FOAM MOLDING & BRACKETS TYP. SEE COLOR SWATCH.        | 11) WHITE ARCHITECTURAL FOAM MOLDING.                                | 20) FALSE BALCONY FRENCH BALCHING.                                    | 29) HARD PLANK LAP SIDING. COLOR: WHITE. SEE COLOR SWATCH.                       | 38) DECORATIVE WHITE CANVAS SAIL.  |
| 3) ALUMINUM BALAMA SHUTTERS TYPICAL. COLOR: FOUNTAIN BLUE. SEE COLOR SWATCH. | 12) WHITE ALUMINUM BRACKET.  | 21) SIGNAGE: 17'-0"W X 10'-0"H (106 SF).                              | 30) DECORATIVE FINIAL.   | 39) OUTLINE OF DECORATIVE FEATURE SHIP MAST ON GROUND. NOT SHOWN FOR ANODIZED ALUMINUM ROLL DOWN DOOR PURPOSE WHATSOEVER WITHOUT THE WRITTEN PERMISSION OF ATACHE GROUP ARCHITECTS, INC. |
| 4) WHITE ALUMINUM & GLASS EXTERIOR IMPACT DOORS AND STOREFRONT.              | 13) WHITE ALUMINUM DECORATIVE BRACKETS TYPICAL.                      | 22) FOUNTAIN WATER FEATURE.   | 31) DECORATIVE WHITE ALUMINUM PICKET RAILINGS.                                   | 40) ANODIZED ALUMINUM ROLL DOWN DOOR PURPOSE WHATSOEVER WITHOUT THE WRITTEN PERMISSION OF ATACHE GROUP ARCHITECTS, INC.  |
| 5) WHITE ALUMINUM & GLASS IMPACT FIXED WINDOWS.                              | 14) WHITE ALUMINUM DECORATIVE OPEN LATTICE.                          | 23) FLAG POLES.   | 32) CORAL ROCK FINISH.   | 41) HOLLOW METAL DOORS PAINTED TO MATCH TABBY STUCCO   |
| 6) GLASS RAILING WITH WHITE ALUMINUM WINDOW FRAME (NO GLASS).                | 15) OPEN TO GARAGE WITH WHITE ALUMINUM WINDOW FRAME (NO GLASS).      | 24) WHITE ALUMINUM AND GLASS EXTERIOR FIXED GLAZING.                  | 33) DECORATIVE WHITE ALUMINUM BRACKET.   | 42) MONUMENT SIGN 8'-0"W X 6'-0"H (48 SF)  |
| 7) WHITE ALUMINUM PICKET RAILINGS.   | 16) SPANDREL GLASS.  | 25) WHITE ALUMINUM AND GLASS EXTERIOR LATTICE. OPEN TO GARAGE BEYOND. | 34) WHITE ALUMINUM & GLASS FIXED WINDOWS.  | 43) SIGNAGE 17'-0"W X 5'-0"H (25 SF)   |
| 8) SMOOTH STUCCO EXTERIOR FINISH. COLOR: WHITE. SEE COLOR SWATCH.            | 17) FINISH: WHITE SMOOTH STUCCO.                                     | 26) WHITE DECORATIVE COLUMNS TYPICAL.                                 | 35) SILVER/TIN COLOR METAL ROOF.   |  |
| 9) WHITE ALUMINUM TRELLIS.   | 18) WHITE ALUMINUM VERTICAL TRELLIS FOR SCENOVA.                     | 27) WHITE DECORATIVE COLUMNS TYPICAL.                                 | 36) LANDSCAPED TRELLIS   |  |

1 NORTH EXTERIOR ELEVATION  
A-2.1.04 1/16"=1'-0"