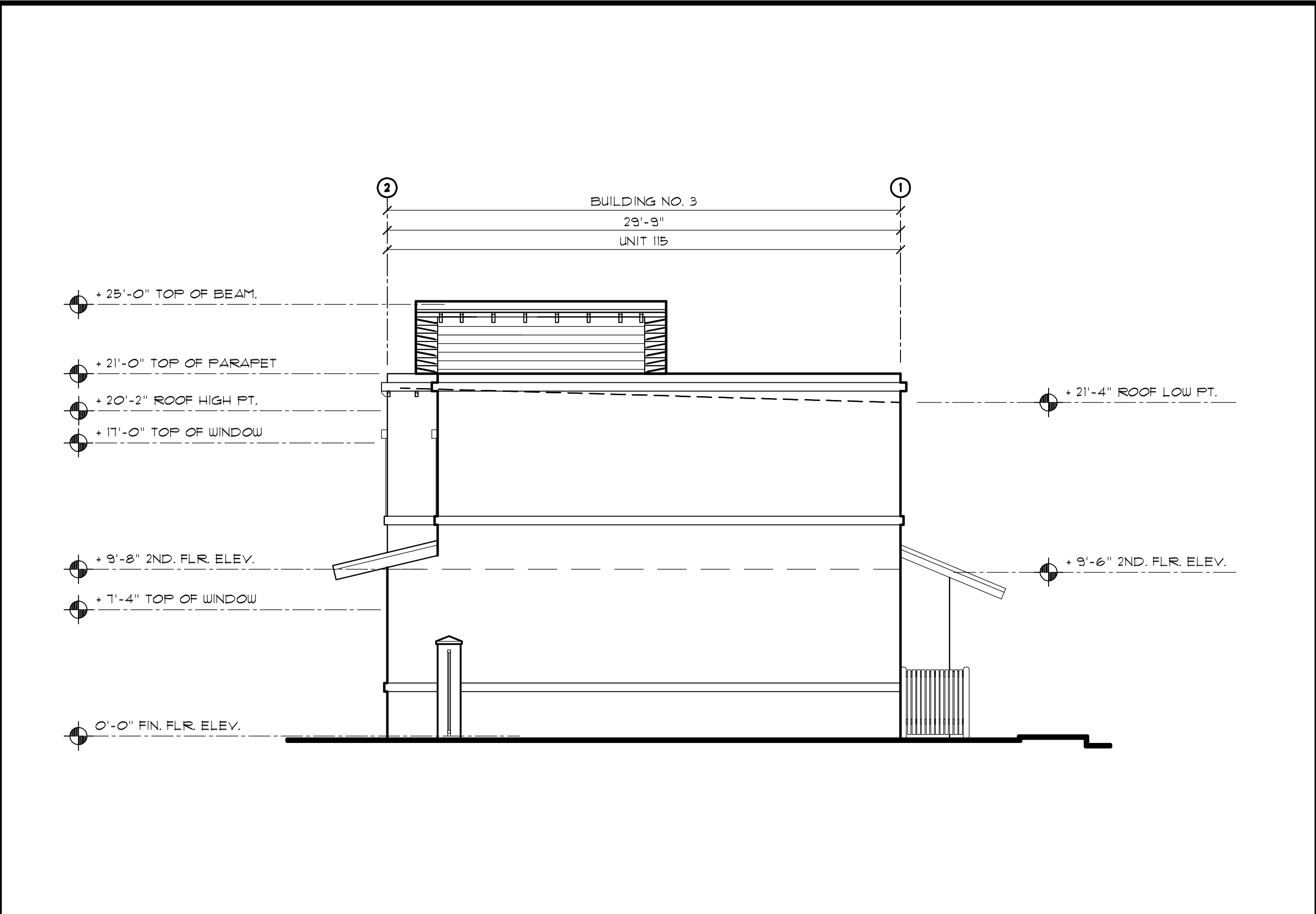
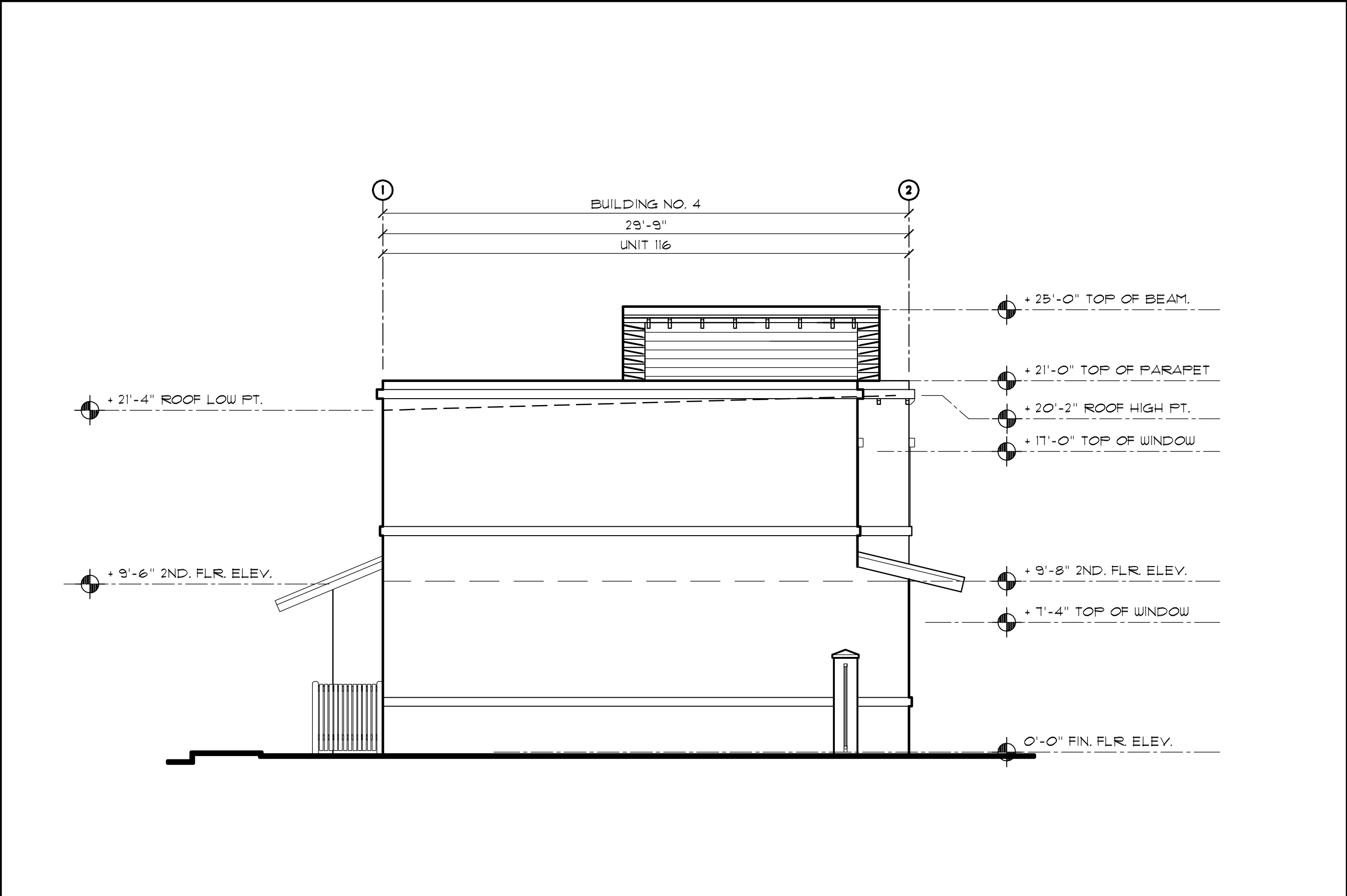


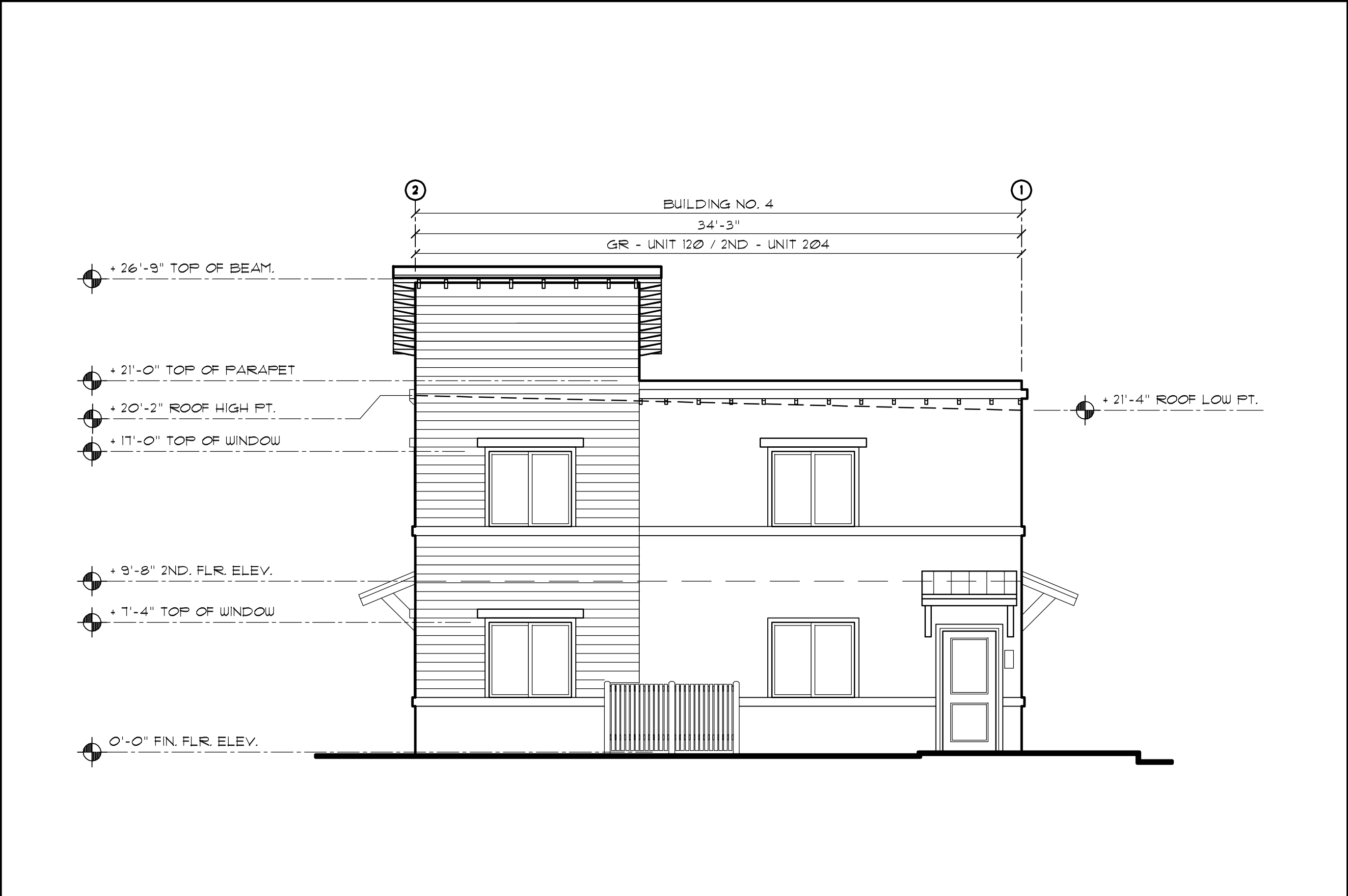
BUILDING NO. 3 LEFT SIDE (WEST) ELEVATION SC: 3/16" = 1'-0"



BUILDING NO. 3 RIGHT SIDE (EAST) ELEVATION SC: 3/16" = 1'-0"



BUILDING NO. 4 LEFT SIDE (WEST) ELEVATION SC: 3/16" = 1'-0"



BUILDING NO. 4 RIGHT SIDE (EAST) ELEVATION SC: 3/16" = 1'-0"

- ### KEY NOTES LEGEND
- 1 LINE OF GRADE.
 - 2 LINE OF CONC. WALKWAY (BROOM FINISH).
 - 3 PAINTED LIGHT TEXTURED STUCCO FINISH.
 - 4 6" WIDE SMOOTH SAND FLOATED STUCCO ACCENT BAND PAINTED.
 - 5 SMOOTH SAND FLOATED STUCCO HORIZONTAL REVEAL (SHIP LAP) LOOK PAINTED.
 - 6 WHITE METAL DRIP/ PAINTED FACIA.
 - 7 RIGID POLYSTYRENE BRACKETS - WOOD TEXTURE PRE FINISHED LOOK.
 - 8 RIGID POLYSTYRENE BANDING/ MOULDING/DENTILS TO RECEIVE STUCCO/PAINT FINISH.
 - 9 ALUMINUM HORIZONTAL ROLLING WINDOW W/ IMPACT-RESISTANT/TINTED GLAZING W/ REMOVABLE INSECT SCREEN BY ECO WINDOW SYSTEMS.
 - 10 FRONT ENTRY STEEL INSULATED IMPACT RATED DOOR - TWO PANEL DESIGN WITH VISION SCOPE.
 - 11 FLAT ROOF SYSTEM GAF - GAF CAP SHEET SYSTEM 80 INITIAL REFLECTIVITY - LEED CREDIT/ ENERGY STAR 4 HPAL CREDIT.
 - 12 MBCI - METAL BUILDING COMPONENTS INC. TYP. MCB SV CRIMP METAL PANEL - ROOFING SYSTEM CORROSION RESISTANT IN WHITE PRE-FINISHED PANELS OVER 3/4" THICK DENS DECK FIRE RATING WITH CURRENT NO.A. BY GEORGIA PACIFIC.
 - 13 TYPICAL STUCCO CONTROL JOINT.
 - 14 EXPOSED WOOD JOIST TO RECEIVE STAIN FINISH.
 - 15 4'-0" HIGH ALUMINUM PICKET FENCING/GATES.
 - 16 WALL MOUNTED UL APPROVED EXTERIOR LIGHT FIXTURE.
 - 17 4'-0" HIGH WHITE PVC (OPAQUE) MECHANICAL EQUIPMENT SCREEN FENCING.
 - 18 3" WIDE SMOOTH SAND FLOATED STUCCO ACCENT BAND PAINTED.
 - 19 42" HIGH ALUMINUM PICKET RAILING, PICKETS TO REJECT 4" DIA. OBJECT.
 - 20 COLLECTION BOX AND RAIN WATER LEADER.

PAINT COLOR LEGEND

EXTERIOR BUILDING PAINT SPECIFICATION

• NOTE: ALL EXTERIOR COLORS FROM SHERWIN-WILLIAMS MANUFACTURER. APPROVED COLORS FROM CITY OF HOLLYWOOD, FLORIDA COLOR CHART.

EXTERIOR ELEVATIONS PAINT KEY LEGEND

PAINT COLOR SCHEDULE - SHERWIN WILLIAMS MFR.		
TAG	ITEM DESCRIPTION	COLOR SPECIFICATION
A	BLDG. WALL BASE COLOR	SHERWIN WILLIAMS - THRESHOLD TAUPE SUT501
B	BLDG. WALL NO. 1	SHERWIN WILLIAMS - LOGGIA BUT506
C	BLDG. WALL NO. 2	SHERWIN WILLIAMS - CHINA DOLL BUT517
D	BLDG. WALL "SHIP LAP LOOK"	SHERWIN WILLIAMS - CONCORD BUFF BUT684
E	ACCENT SMOOTH BANDING	SHERWIN WILLIAMS - WESTHIGHLAND WHITE BUT566
F	FASCIA BOARD	SHERWIN WILLIAMS - WESTHIGHLAND WHITE BUT566
G	BANDING/DECORATIVE ALUMINUM EXTRUSIONS	SHERWIN WILLIAMS - WESTHIGHLAND WHITE BUT566
H	SV CRIMP METAL ROOFING PANELS	WHITE
I	WINDOW ALUMINUM FRAME	WHITE
J	ALUMINUM PICKET FENCING & GATES	BLACK
K	WOOD BRACKETS/ENTRY CEILING	SHERWIN WILLIAMS - WARM CHESTNUT STAIN


revision	type	date	by

TO THE BEST OF THE ARCHITECT OR ENGINEERS KNOWLEDGE, THE PLANS AND SPECIFICATIONS COMPLY WITH THE APPLICABLE MINIMUM CODES AND THE APPLICABLE FIRE SAFETY STANDARDS AT THE TIME OF THEIR PREPARATION AS DETERMINED BY THE LOCAL AUTHORITIES IN ACCORDANCE WITH (F.B.C.) FLORIDA BUILDING CODE LATEST EDITION AND AMENDMENTS IN ITS ENTIRETY AND THE FLORIDA FIRE PREVENTION CODE, 2007 EDITION.

NOTE: AUTHENTIC COPIES OF THIS DOCUMENT SHALL BEAR THE SIGNATURE IN ORIGINAL AND THE RAISED SEAL OF THE ATTESTING ARCHITECT OR ENGINEER OF RECORD.

ALL DESIGNS AND DETAILS INDICATED BY AND REPRESENTED BY THIS DRAWING ARE FOR USE ON AND IN CONJUNCTION WITH THE SPECIFIED PROJECT. ALL DRAWINGS CONTAINED HEREIN ARE THE PROPERTY OF FRANK COSTOYA ARCHITECT, P.A. AND NOT TO BE USED OR REPRODUCED IN WHOLE OR IN PART WITHOUT THE ADVANCED WRITTEN PERMISSION AND CONSENT FROM THE FIRM. WRITTEN DIMENSIONS TAKE PRECEDENCE OVER SCALED DIMENSIONS.

COPYRIGHT FCA 2010 - 2015



FRANK COSTOYA ARCHITECT, P.A.
Architecture - Land Planning
5230 South University Drive - Suite 103
Davie, Florida 33328
Tel: (954) 680-4440 / Fax: (954) 680-4441
Member American Institute of Architects
AA26000696 - AR0012198



Link
construction group



COMMUNITY DEVELOPMENT
& CODE COMPLIANCE
CITY OF HOLLYWOOD, FL

LIBERIA ECONOMIC & SOCIAL DEVELOPMENT, INC.
CITY OF HOLLYWOOD, FL

A DESIGN-BUILD PROJECT
CITY OF HOLLYWOOD CHDO PROJECT 10-1
FINAL SITE PLAN REVIEW
**WILEY STREET
REDEVELOPMENT**
BETWEEN S. 56 AVE & S. 57 AVE.
HOLLYWOOD, FLORIDA

drawing date:
OCT. 4, 2010

drwn by: DBK/RG	chkd by: FC
--------------------	----------------

drawing scale:
3/16" = 1'-0"

project number:
FCA-1072

sheet title:

• BUILDING NO. 3 & 4
SIDE
ELEVATIONS

OCCUPANCY R-2
TYPE III - UNPROTECTED

seal/signature:

FRANK COSTOYA, JR., AIA.
FL. REG. NO. AR0012198

date:

sheet number:

A-5.5

consecutive
of sheets