

SCALE: VICTOR ELIAS EISENSTEIN, AIA ARCHITECT

THE HALLAKA CENTER
MOTEL AND OFFICES
324 MINNESOTA STREET, HOLLYWOOD, FLA. 33019

REVISIONS:

△ TAC COMMENTS
6-20-10

SUBMITTAL
TAC

PRELIMINARY SITE PLAN
RESUBMITTAL REVIEW

SCALE: AS SHOWN

DATE: 1-31-10

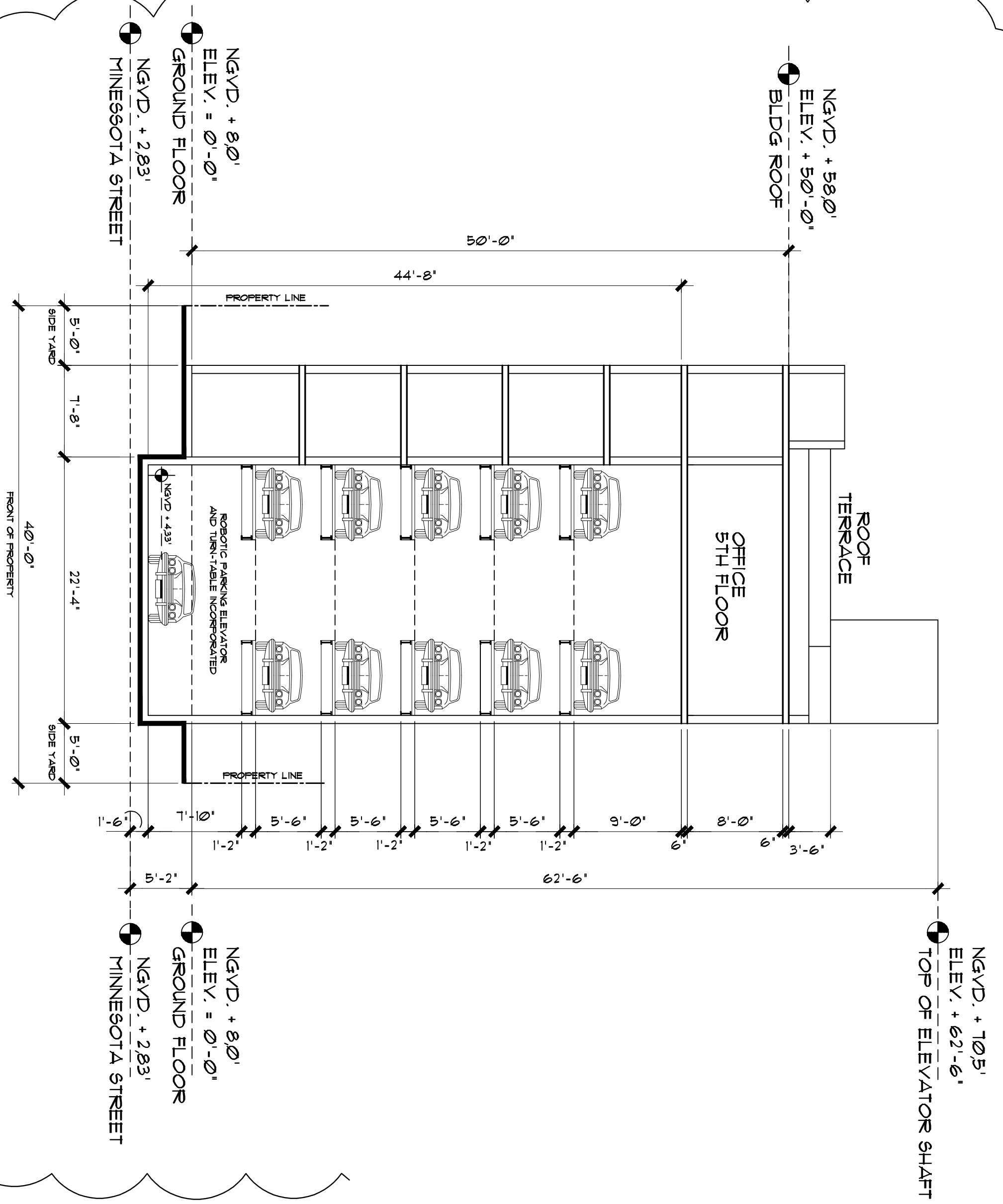
PROJECT NO:

DRAWN BY: CHECKED BY:

NOVICA YEE

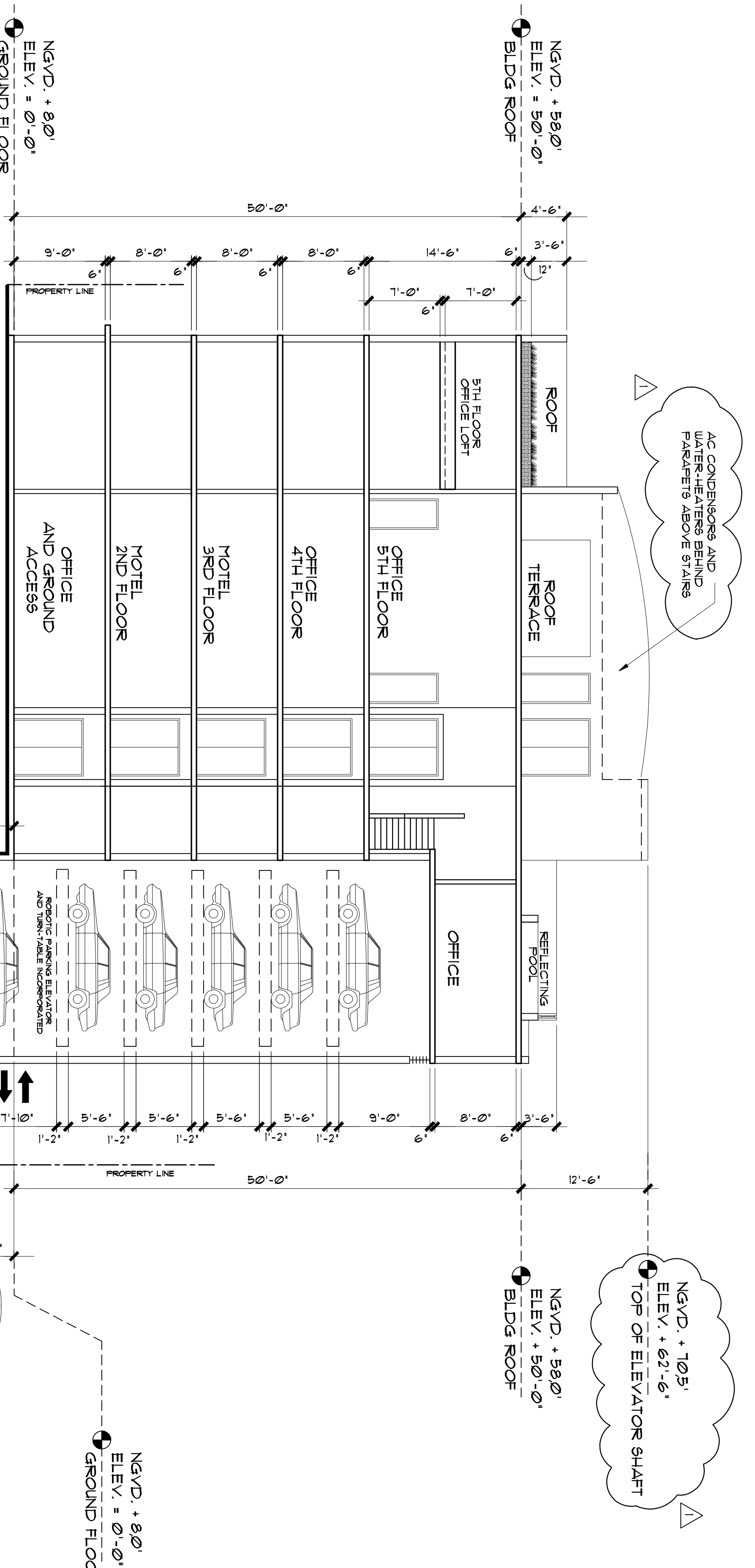
PAGE NO:

A-5



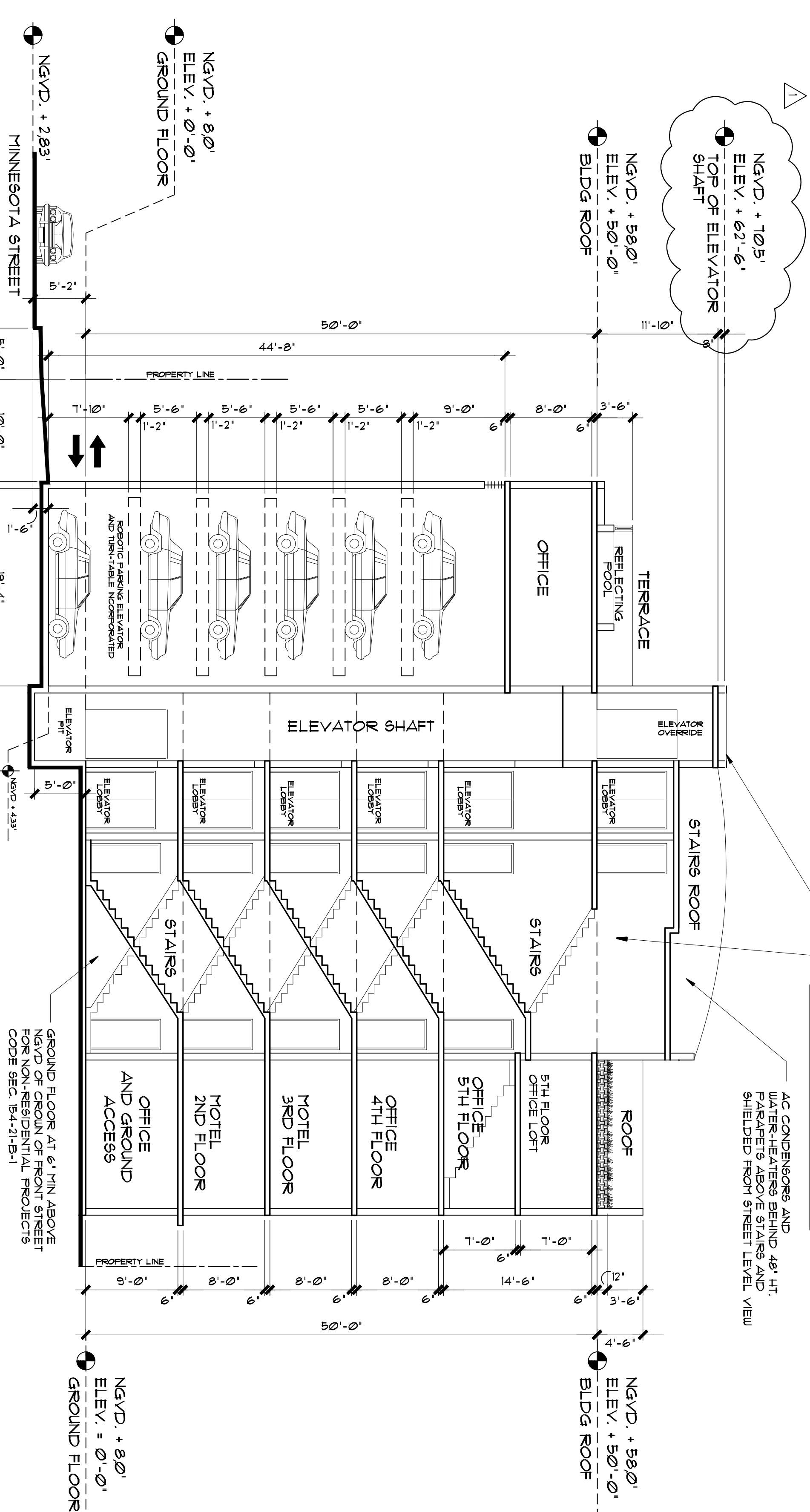
TRANSVERSAL SECTION
SCALE: 1/8" = 1'-0"

CC A2



LONGITUDINAL SECTION
SCALE: 1/8" = 1'-0"

AA A2



LONGITUDINAL SECTION
SCALE: 1/8" = 1'-0"

AA A2

VERTICAL CIRCULATION IS EXCLUDED FROM MAX BUILDING HEIGHT 31' AND ALSO ELEVATIONS BEYOND 31' ARE DENOTED HEREIN.

AC CONDENSERS AND WATER HEATERS BEHIND PARAPET IS ABOVE 5' PLANS AND SHIELDED FROM STREET LEVEL VIEW

PARKING GARAGE NOTES

ROBOTIC PARKING SYSTEM FEATURES 12 SPACES THAT ARE NOT PAINTED OR NO STAINLESS STEEL OR NOT GALVANIZED

CLOSED GARAGE

PARKING GARAGE DOES NOT COMPLY WITH 40% OF OPEN VENTILATION OF THE TOTAL GARAGE FLOOR AREA

PARKING STRUCTURE LIFE SAFETY DEVICES

ROBOTIC PARKING SYSTEM FEATURES 12 SPACES THAT ARE NOT PAINTED OR NO STAINLESS STEEL OR NOT GALVANIZED

ROBOTIC PARKING SYSTEM FEATURES 12 SPACES THAT ARE NOT PAINTED OR NO STAINLESS STEEL OR NOT GALVANIZED