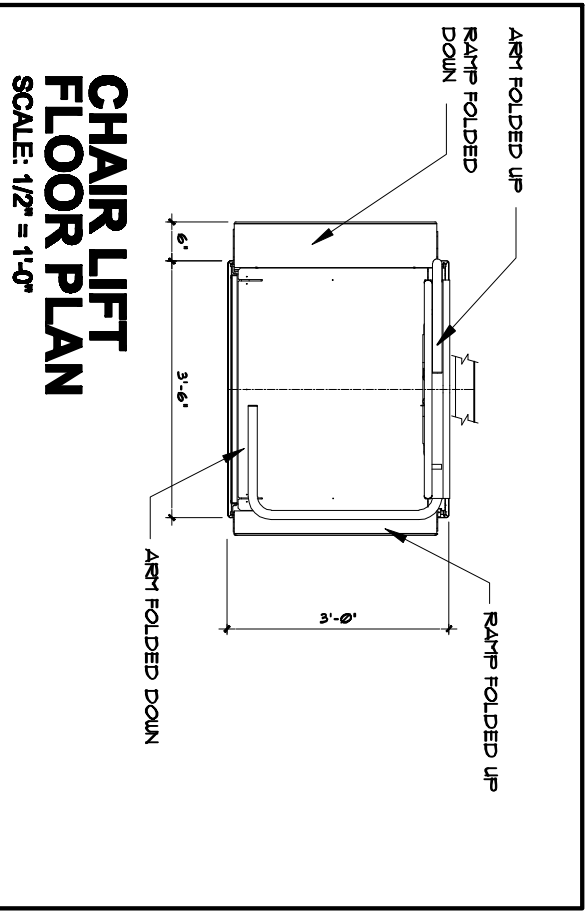
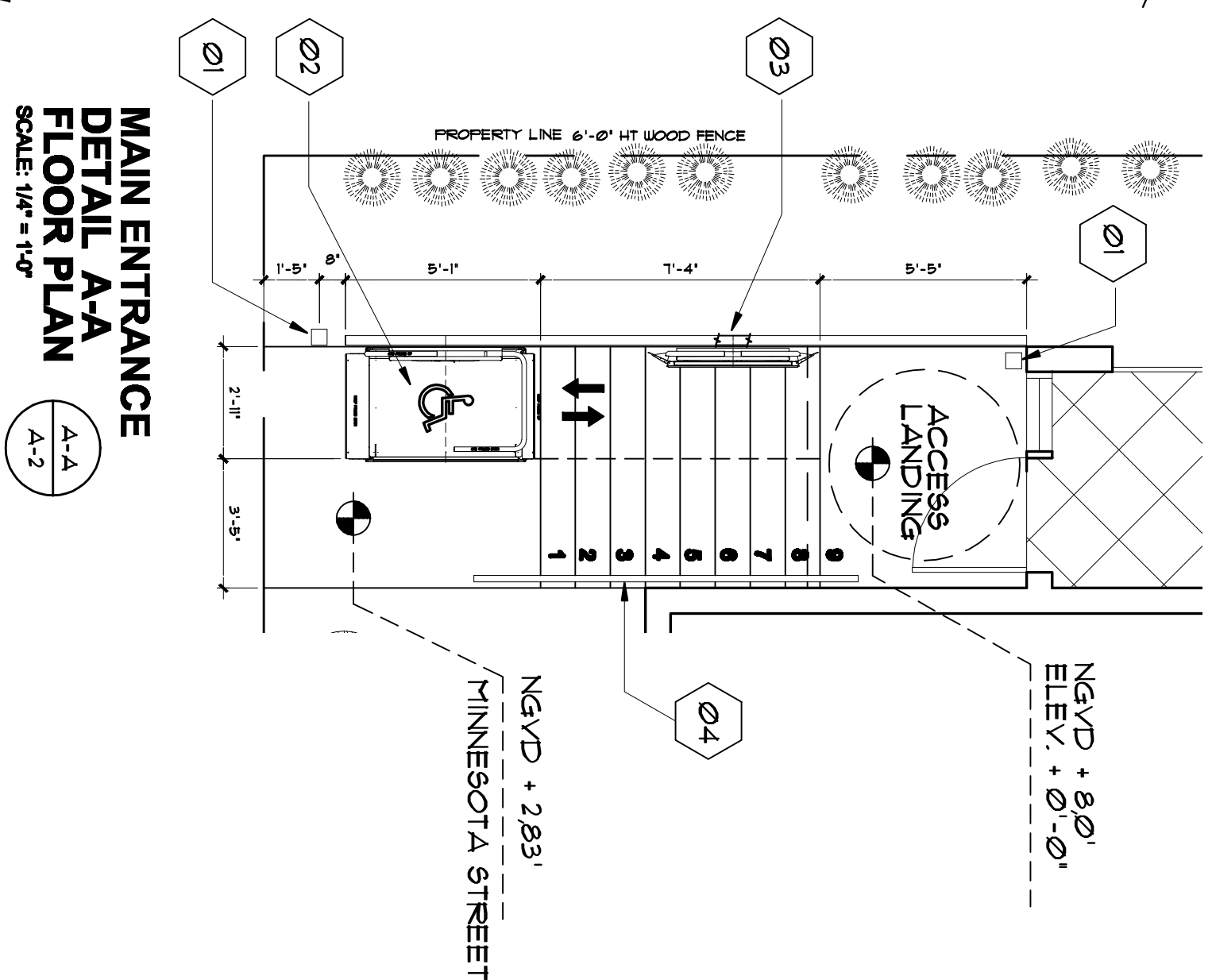


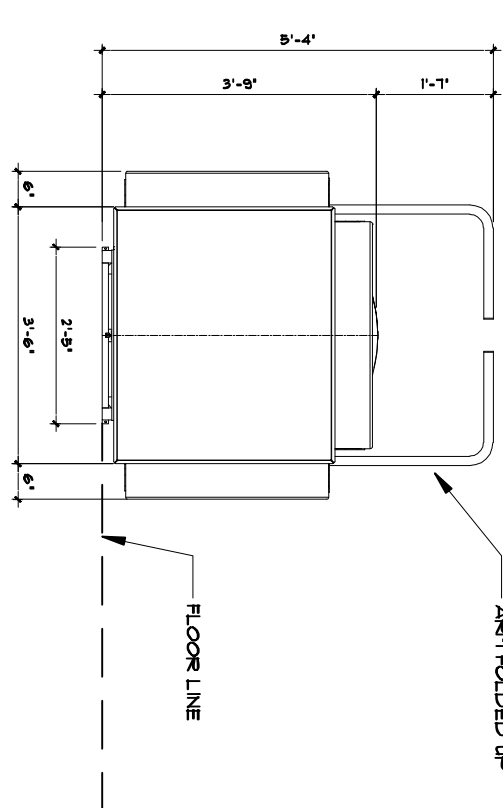
KEY-TAG CHART

- Ø1 CALL STATION
- Ø2 CHAIR LIFT IN OPEN POSITION
- Ø3 CHAIR LIFT IN SECURED CLOSED POSITION WHEN NOT IN USE
- Ø4 HAND-RAIL AT 2'-0" HT.



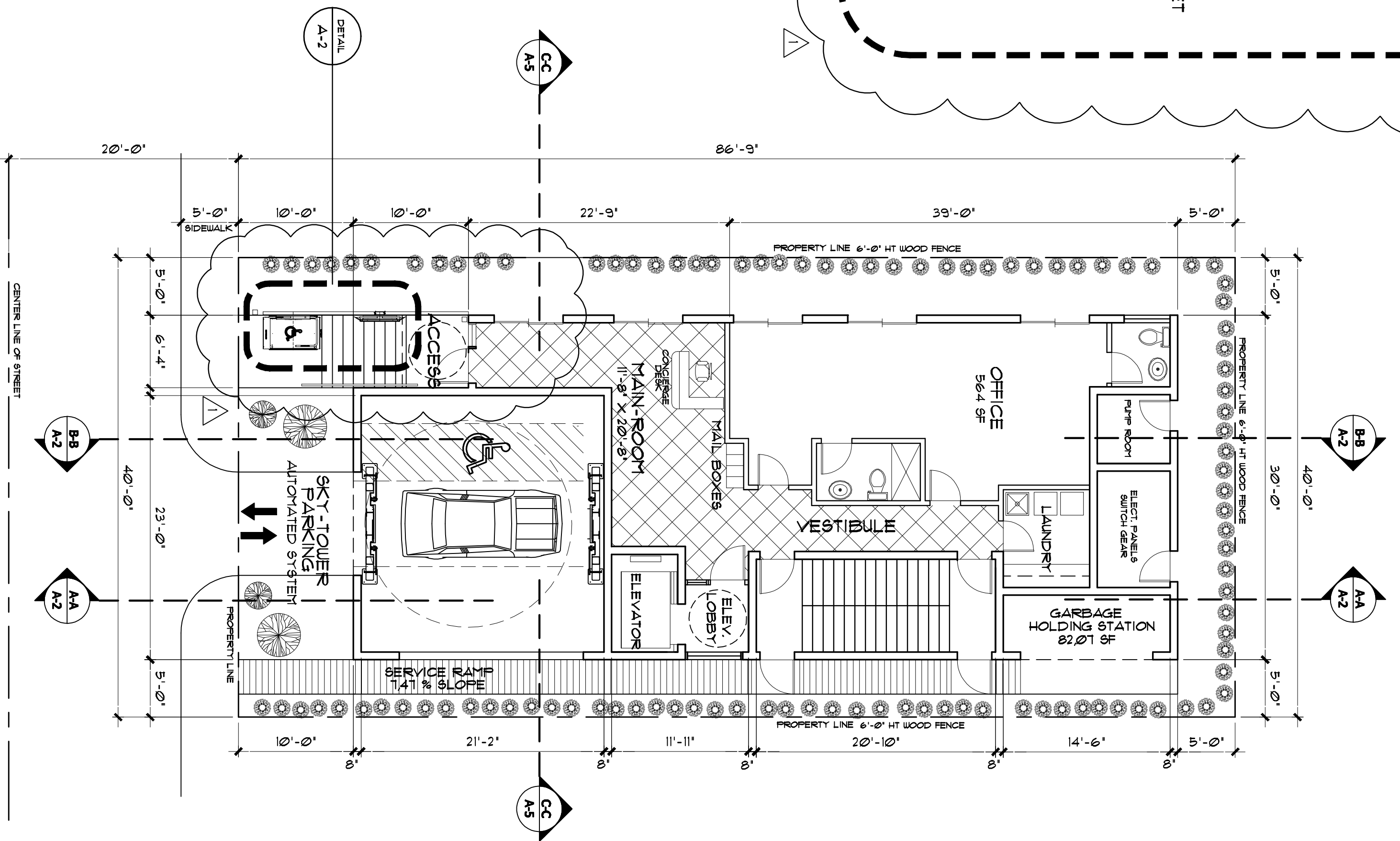
**CHAIR LIFT
TOP VIEW
secured-closed position
when not in use**

SCALE: 1/2" = 1'-0"



**CHAIR LIFT
FRONT VIEW
secured-closed position
when not in use**

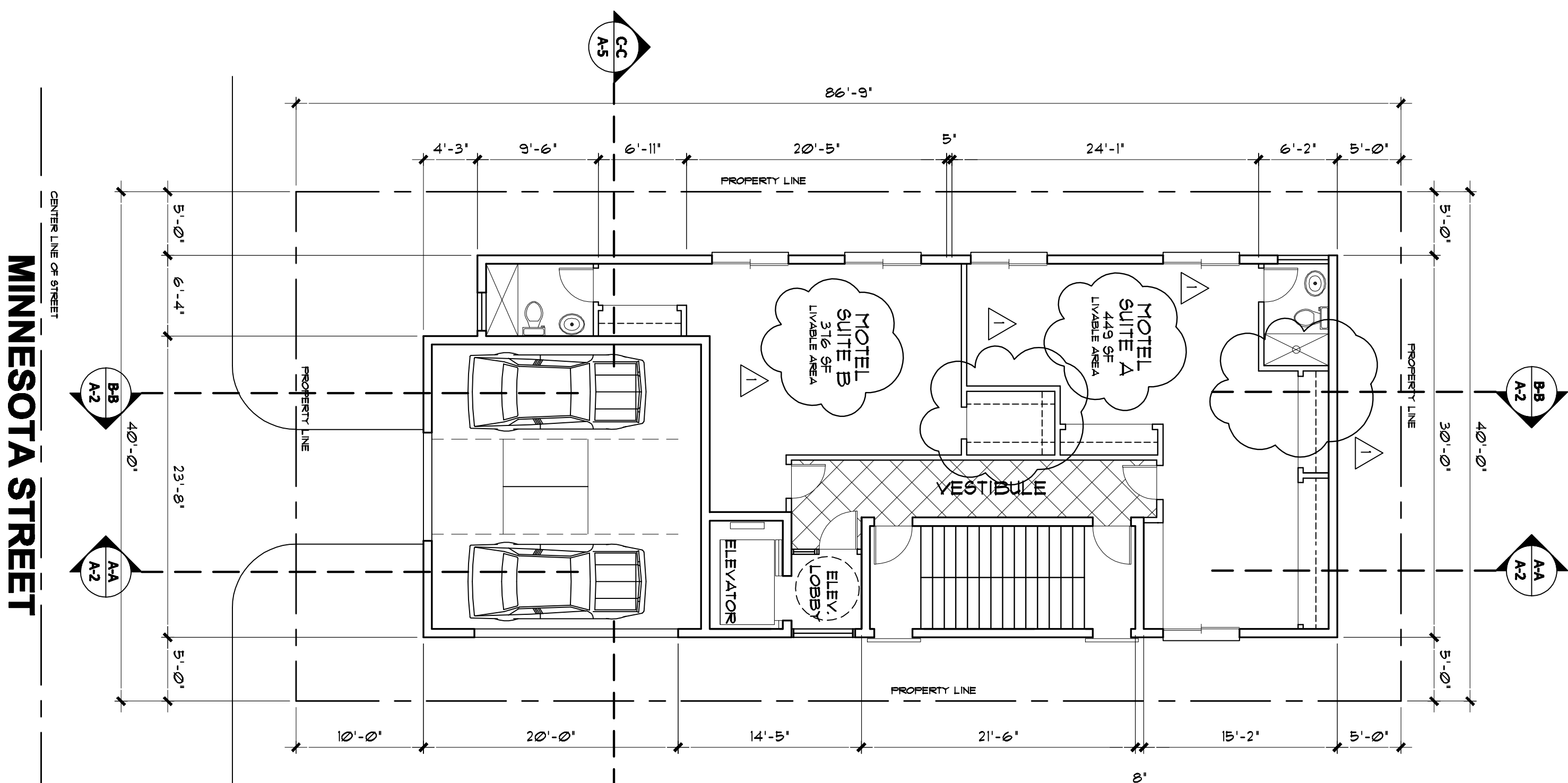
SCALE: 1/2" = 1'-0"



**GROUND FLOOR
MAIN ACCESS**

SCALE: 1/8" = 1'-0"

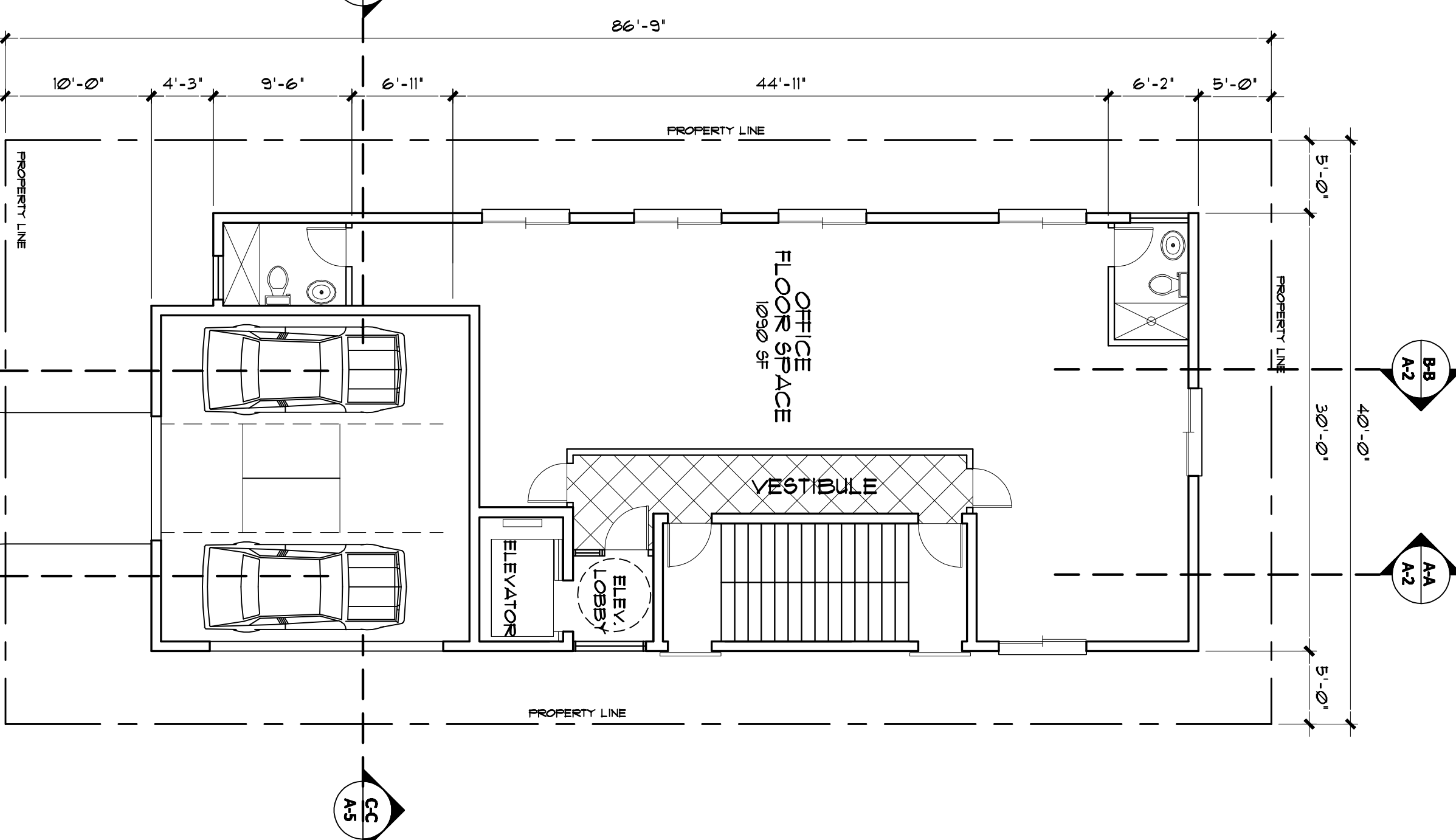
NGVD + 8.0'
ELEV. + 0'-0"
GROUND



**2nd and 3rd MOTEL
typical floors**

SCALE: 1/8" = 1'-0"

ELEV. + 12'-0"
3RD FLOOR
ELEV. + 9'-6"
2ND FLOOR



4th floor office

SCALE: 1/8" = 1'-0"

ELEV. + 26'-6"
4TH FLOOR

PROJECT CODE COMPLIANCE

OCCUPANCY CLASSIFICATION

MOTEL GROUP R-2
OFFICE GROUP B

BUILDING CONSTRUCTION TYPE:

TYPE I, NON-CONCRETE CONCRETE STRUCTURE, FIRE PROTECTED FULLY SPRINKLERED WITH FIRE ALARM AND SMOKE DETECTORS

AREA SEPARATION

BETWEEN HOTEL AND OFFICE USE
FIRE-RATE SEPARATION REQUIRED: 1 HOUR
PROVIDED: 2 HOUR

PARKING STRUCTURE CONSTRUCTION TYPE:

TYPE I, NON-CONCRETE METAL AND CONCRETE STRUCTURE, FIRE PROTECTED FULLY SPRINKLERED WITH FIRE ALARM, SMOKE DETECTORS AND SMOKE EVACUATION SYSTEM

AREA SEPARATION

BETWEEN PARKING STRUCTURE AND BUILDING
FIRE-RATE SEPARATION PROVIDED: 2 HOUR

GOVERNING CODES

2001 FLORIDA BUILDING CODE WITH 2009 SUPPLEMENTS
2001 FLORIDA BUILDING CODE CHAPTER 11, ADA
2009 NEC NATIONAL ELECTRIC CODE
2001 IFIRC FLORIDA FIRE PREVENTION CODE
2001 NFPA 101 LIFE SAFETY CODE
2001 NFPA 101 LIFE SAFETY CODE
2001 NFPA 101 LIFE SAFETY CODE

BLDG OCCUPANT LOAD

TOTAL 66
HOTEL 1,650 SF
50 SF PER OCCUPANT * 33
OFFICE 3,348 SF
100 SF PER OCCUPANT * 33
TOTAL 66

MIN NUMBER OF EXITS REQUIRED

OCCUPANT LOAD TO 500 2
OCCUPANT LOAD 501 TO 1000 4
OCCUPANT LOAD ABOVE 1000 4
TOTAL 10

MEANS OF EGRESS

EXITS REQUIRED 2
EXITS PROVIDED 2

ACCESSIBILITY NOTES

2001 FLORIDA BUILDING CODE CHAPTER 11, ESTABLISHES STANDARDS FOR ACCESSIBILITY TO PLACES OF PUBLIC ACCOMMODATION AND COMMERCIAL FACILITIES BY INDIVIDUALS WITH DISABILITIES.
BUILDING ENTRANCE SHALL BE ON AN ACCESSIBLE ROUTE WITH NO CHANGE IN LEVEL OF MORE THAN 1/2" ALONG ROUTE AND MAX LEVEL CHANGE OF 3/4" AT ENTRY DOORS AND THRESHOLDS.
ALL DOORS SHALL PROVIDE A CLEAR OPENING OF 32" WHEN DOOR IS OPEN 90 DEGREES. A STANDARD 34 INCHES DOOR PROVIDES AND ACCEPTABLE MINIMUM 32 INCHES OPENING.
LIGHT SWITCHES AND ELECTRICAL CONTROLS, UNLESS THE REAR ROOMS ARE TO BE LOCATED NO HIGHER THAN 48" AND NO LOWER THAN 15" AFF.

REINFORCEMENT SHALL BE PROVIDED WITH PRE-CASTED CONCRETE OR METAL REINFORCEMENT TO ALL PLACES OF PUBLIC ACCOMMODATION AND COMMERCIAL FACILITIES BY INDIVIDUALS WITH DISABILITIES.
TOLERANCES: SUCH REINFORCEMENT SHALL BE IN ACCORDANCE WITH THE DIRECTIVES GIVEN ON THE ILLUSTRATIONS AND IN COMPLIANCE WITH THE 2001 FLORIDA BUILDING CODE FOR THE STRUCTURAL REINFORCEMENT OF 150 LBS APPLIED ON ANY DIRECTION.

EXTERIOR ILLUMINATION

EXTERIOR LIGHTING IS NOT TO EXCEED .95 FOOT CANDLES AT ALL PROPERTY LINES ADJACENT TO EXISTING RESIDENTIAL USES

WINDOW AND DOOR ROUGH CLEAR OPENINGS

PLEASE DIMENSIONS SHALL HAVE A MIN OF 32 INCHES WITH THE DOOR OPEN 90 DEGREES, MEASURED BETWEEN THE FACE OF THE DOOR AND THE OPPOSITE STOP.
2001 IFIRC 11-4.13.5

ARCHITECTURAL DRAWINGS ARE INDICATING REQUIRED CLEAR OPENING DIMENSIONS AT DOORS AND WINDOWS PROVIDE ROUGH OPENINGS TO COMPLY WITH DOORWAY CLEAR PASSAGE AS PER 2001 IFIRC REQUIREMENTS.
FLOOR PLANS DIMENSIONS DO NOT INCLUDE ANY REQUIRED ADDITIONAL ROUGH OPENINGS AT E.A. SIDE FOR DOOR OR WINDOW REINFORCING.

CONTRACTOR SHALL VERIFY DISCREPANCIES WITH THE ARCHITECT.

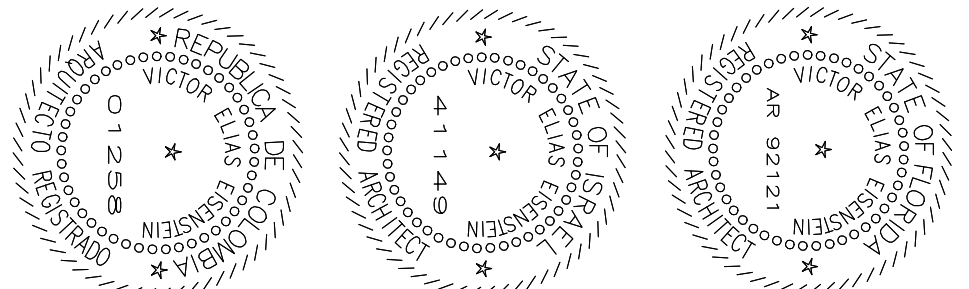
GARAGE HOLDING STATION DIMENSIONS:

14'-6" LONG X 5'-6" WIDE * 8'-0" SF
DUPHISTER SIZE
2'-0" WIDE X 3'-0" HT X 6'-0" LONG
ONE CAR VARIO * 201 G/LB
DUPHISTER ROOM CAPACITY
TWO CUBIC YARDS * 404 G/LB
DUPHISTER ROOM IS AIR CONDITIONED
AS PER CITY CODE AND ORDINANCES

VOLUME OF TRASH CALCULATION

OFFICE 1 CU. YD EACH 10,000 SF PER DAY
10,000/3348 * 0.34 CU.YD
0.34 X 3 DAYS * 1.02 CU. YD PER WEEK
HOTEL 0.16 CU. YD EACH ROOM PER WEEK
0.16 X 4 ROOMS * 0.64 CU. YD PER WEEK
DUPHISTER CAPACITY 2 CU. YD SERVED 2 TIMES PER WEEK * 4 CU.YD

VEE
VICTOR ELIAS EISENSTEIN, AIA
ARCHITECT
VICTOR EISENSTEIN ARCHITECT
20355 NE 34th SUITE 740
AVENTURA, FLA 33180
786-225-1318



SEAL: VICTOR ELIAS EISENSTEIN, AIA, ARCHITECT

**THE HALLAKA CENTER
MOTEL AND OFFICES**
324 MINNESOTA STREET, HOLLYWOOD, FLA. 33019

REVISIONS:
TAC COMMENTS
6-20-10

SUBMITTAL
TAC

PRELIMINARY SITE PLAN
REVISIONAL REVIEW

SCALE: AS SHOWN

DATE: 1-31-10

PROJECT NO:

DRAWN BY: YEE

CHECKED BY:

DATE: 1-31-10

A-2

THE DESIGNS AND DETAIL DRAWINGS SHOWN IN THIS PAGE HAVE ALL THE COPYRIGHTS RESERVED AND ARE THE LEGAL PROPERTY OF VICTOR ELIAS EISENSTEIN, AIA, ARCHITECT. THEIR USE FOR REPRODUCTION, COPY OR DISTRIBUTION IS PROHIBITED UNLESS WRITTEN AGREEMENT IS GIVEN BY THE ARCHITECT AND THE PURCHASE OF THESE DRAWINGS IN NO WAY TRANSFERS ANY COPYRIGHT OR OTHER OWNERSHIP INTEREST ON IT TO THE CONTRACTED BUYER, EXCEPT FOR THE RIGHT TO BUILD ONE AND ONLY ONCE, THE SPECIFIED CONTRACTED WORK INDICATED THRU THE DETAILS AND SPECIFICATIONS GIVEN ON THESE DRAWINGS.