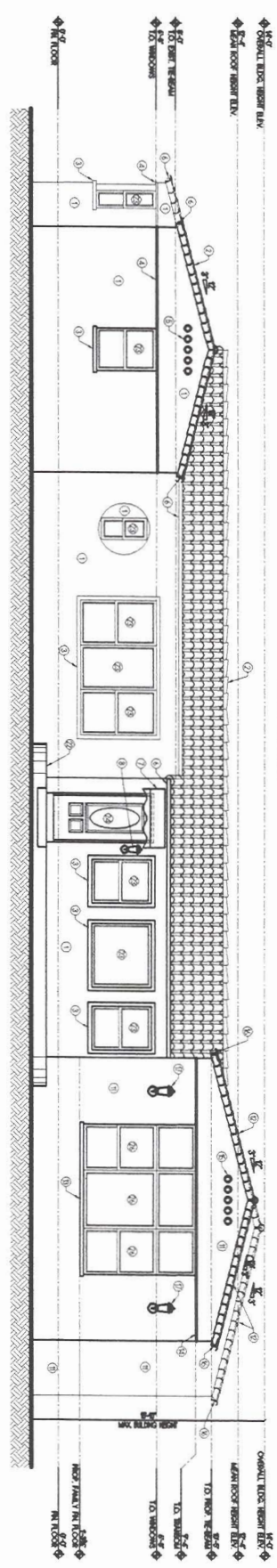
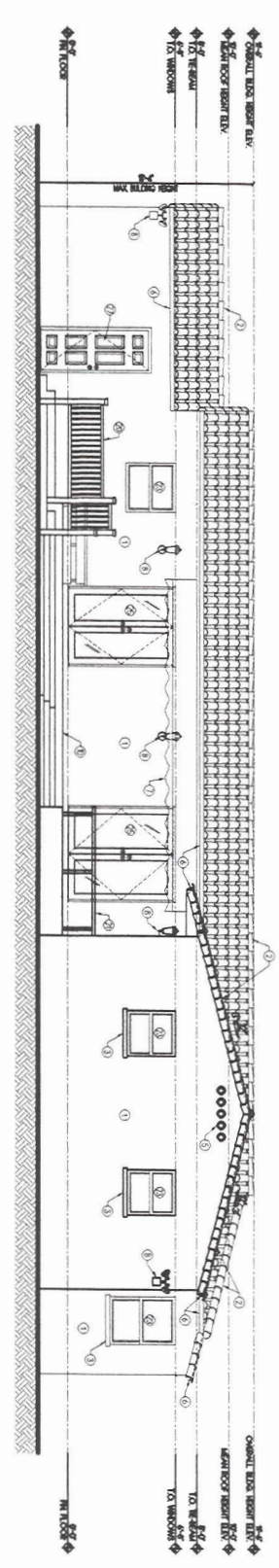


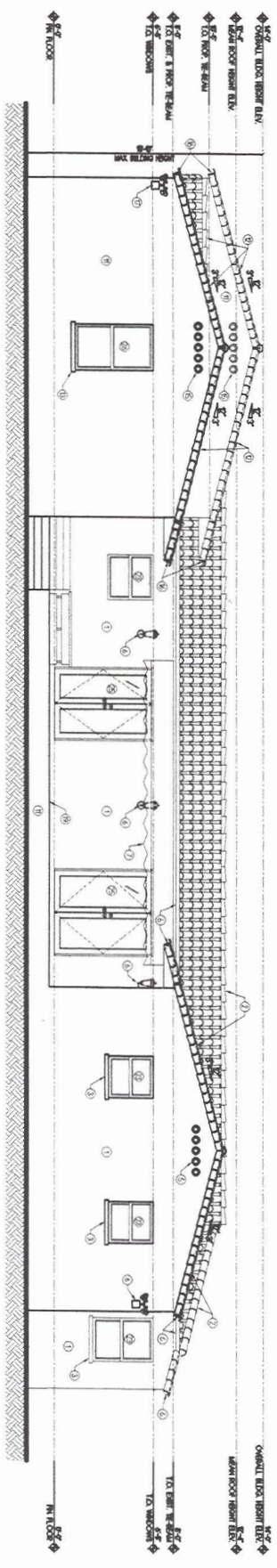
EXISTING EAST ELEVATION
SCALE: 1/4" = 1'-0"



NEW EAST ELEVATION
SCALE: 1/4" = 1'-0"



EXISTING WEST ELEVATION
SCALE: 1/4" = 1'-0"



NEW WEST ELEVATION
SCALE: 1/4" = 1'-0"

FACADE KEY NOTES

- 1 EXISTING ROOF TO REMAIN UNLESS NOTED OTHERWISE WITH SERRINI-WILLIAMS PAINT, COLOR NO. SW 7005 FINE WIND
- 2 EXISTING 3" TYPE CHERRY ROOF TILES TO REMAIN
- 3 EXISTING 1" RIGID BALCONY SLAB TO BE PAINTED WITH SERRINI-WILLIAMS PAINT, COLOR NO. SW 7005 FINE WIND
- 4 EXISTING 1" RIGID BALCONY SLAB TO BE PAINTED WITH SERRINI-WILLIAMS PAINT, COLOR NO. SW 7005 FINE WIND
- 5 EXISTING RECONSTRUCTIVE RE-CAST CONCRETE VENT PIPES TO BE PAINTED WITH SERRINI-WILLIAMS PAINT, COLOR NO. SW 7005 FINE WIND
- 6 EXISTING 1" RIGID BALCONY SLAB TO BE PAINTED WITH SERRINI-WILLIAMS PAINT, COLOR NO. SW 7005 FINE WIND
- 7 EXISTING 1" RIGID BALCONY SLAB TO BE PAINTED WITH SERRINI-WILLIAMS PAINT, COLOR NO. SW 7005 FINE WIND
- 8 EXISTING 1" RIGID BALCONY SLAB TO BE PAINTED WITH SERRINI-WILLIAMS PAINT, COLOR NO. SW 7005 FINE WIND
- 9 EXISTING 1" RIGID BALCONY SLAB TO BE PAINTED WITH SERRINI-WILLIAMS PAINT, COLOR NO. SW 7005 FINE WIND
- 10 EXISTING 1" RIGID BALCONY SLAB TO BE PAINTED WITH SERRINI-WILLIAMS PAINT, COLOR NO. SW 7005 FINE WIND
- 11 EXISTING 1" RIGID BALCONY SLAB TO BE PAINTED WITH SERRINI-WILLIAMS PAINT, COLOR NO. SW 7005 FINE WIND
- 12 EXISTING 1" RIGID BALCONY SLAB TO BE PAINTED WITH SERRINI-WILLIAMS PAINT, COLOR NO. SW 7005 FINE WIND
- 13 EXISTING 1" RIGID BALCONY SLAB TO BE PAINTED WITH SERRINI-WILLIAMS PAINT, COLOR NO. SW 7005 FINE WIND
- 14 EXISTING 1" RIGID BALCONY SLAB TO BE PAINTED WITH SERRINI-WILLIAMS PAINT, COLOR NO. SW 7005 FINE WIND
- 15 EXISTING 1" RIGID BALCONY SLAB TO BE PAINTED WITH SERRINI-WILLIAMS PAINT, COLOR NO. SW 7005 FINE WIND
- 16 EXISTING 1" RIGID BALCONY SLAB TO BE PAINTED WITH SERRINI-WILLIAMS PAINT, COLOR NO. SW 7005 FINE WIND
- 17 EXISTING 1" RIGID BALCONY SLAB TO BE PAINTED WITH SERRINI-WILLIAMS PAINT, COLOR NO. SW 7005 FINE WIND
- 18 EXISTING 1" RIGID BALCONY SLAB TO BE PAINTED WITH SERRINI-WILLIAMS PAINT, COLOR NO. SW 7005 FINE WIND
- 19 EXISTING 1" RIGID BALCONY SLAB TO BE PAINTED WITH SERRINI-WILLIAMS PAINT, COLOR NO. SW 7005 FINE WIND
- 20 EXISTING 1" RIGID BALCONY SLAB TO BE PAINTED WITH SERRINI-WILLIAMS PAINT, COLOR NO. SW 7005 FINE WIND
- 21 EXISTING 1" RIGID BALCONY SLAB TO BE PAINTED WITH SERRINI-WILLIAMS PAINT, COLOR NO. SW 7005 FINE WIND
- 22 EXISTING 1" RIGID BALCONY SLAB TO BE PAINTED WITH SERRINI-WILLIAMS PAINT, COLOR NO. SW 7005 FINE WIND
- 23 EXISTING 1" RIGID BALCONY SLAB TO BE PAINTED WITH SERRINI-WILLIAMS PAINT, COLOR NO. SW 7005 FINE WIND
- 24 EXISTING 1" RIGID BALCONY SLAB TO BE PAINTED WITH SERRINI-WILLIAMS PAINT, COLOR NO. SW 7005 FINE WIND
- 25 EXISTING 1" RIGID BALCONY SLAB TO BE PAINTED WITH SERRINI-WILLIAMS PAINT, COLOR NO. SW 7005 FINE WIND
- 26 EXISTING 1" RIGID BALCONY SLAB TO BE PAINTED WITH SERRINI-WILLIAMS PAINT, COLOR NO. SW 7005 FINE WIND
- 27 EXISTING 1" RIGID BALCONY SLAB TO BE PAINTED WITH SERRINI-WILLIAMS PAINT, COLOR NO. SW 7005 FINE WIND
- 28 EXISTING 1" RIGID BALCONY SLAB TO BE PAINTED WITH SERRINI-WILLIAMS PAINT, COLOR NO. SW 7005 FINE WIND
- 29 EXISTING 1" RIGID BALCONY SLAB TO BE PAINTED WITH SERRINI-WILLIAMS PAINT, COLOR NO. SW 7005 FINE WIND
- 30 EXISTING 1" RIGID BALCONY SLAB TO BE PAINTED WITH SERRINI-WILLIAMS PAINT, COLOR NO. SW 7005 FINE WIND

REVISIONS	
NO.	DESCRIPTION

PA architect inc.
 5450 GRIFFIN ROAD, SUITE 82
 DAVIE, FLORIDA 33314
 TEL: (954) 884-6680 FAX: (954) 881-2631
 e-mail: pagu@pa-architect.com
 FLORIDA LICENSE AA-26007926

ADDITION TO EXISTING RESIDENCE
JAY DELGADO
 HOLLYWOOD, FLORIDA

CLIENT
 JAMES DELGADO

DESIGNED BY:
 PHILIP D. ADLER

DRAWING DATE:
 5-21-08

DATE:
 07-26-08

SCALE:
 1/4" = 1'-0"

DATE:
 07-26-08

SCALE:
 1/4" = 1'-0"

DATE:
 07-26-08

SCALE:
 1/4" = 1'-0"

DATE:
 07-26-08

SCALE:
 1/4" = 1'-0"

DATE:
 07-26-08

SCALE:
 1/4" = 1'-0"