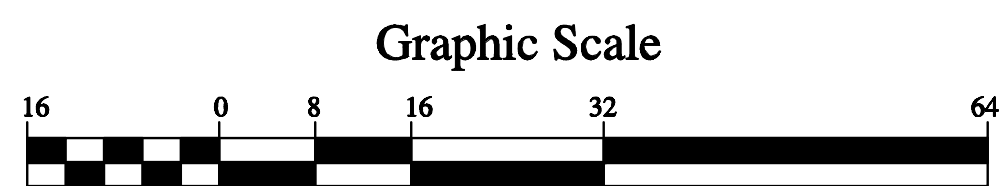
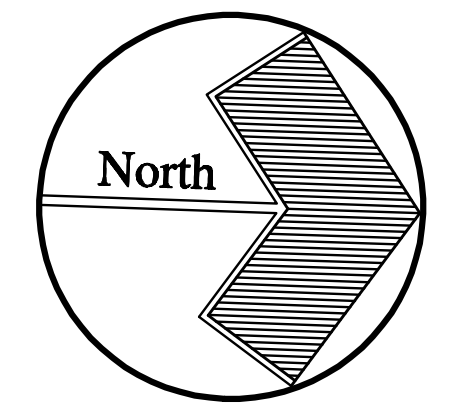
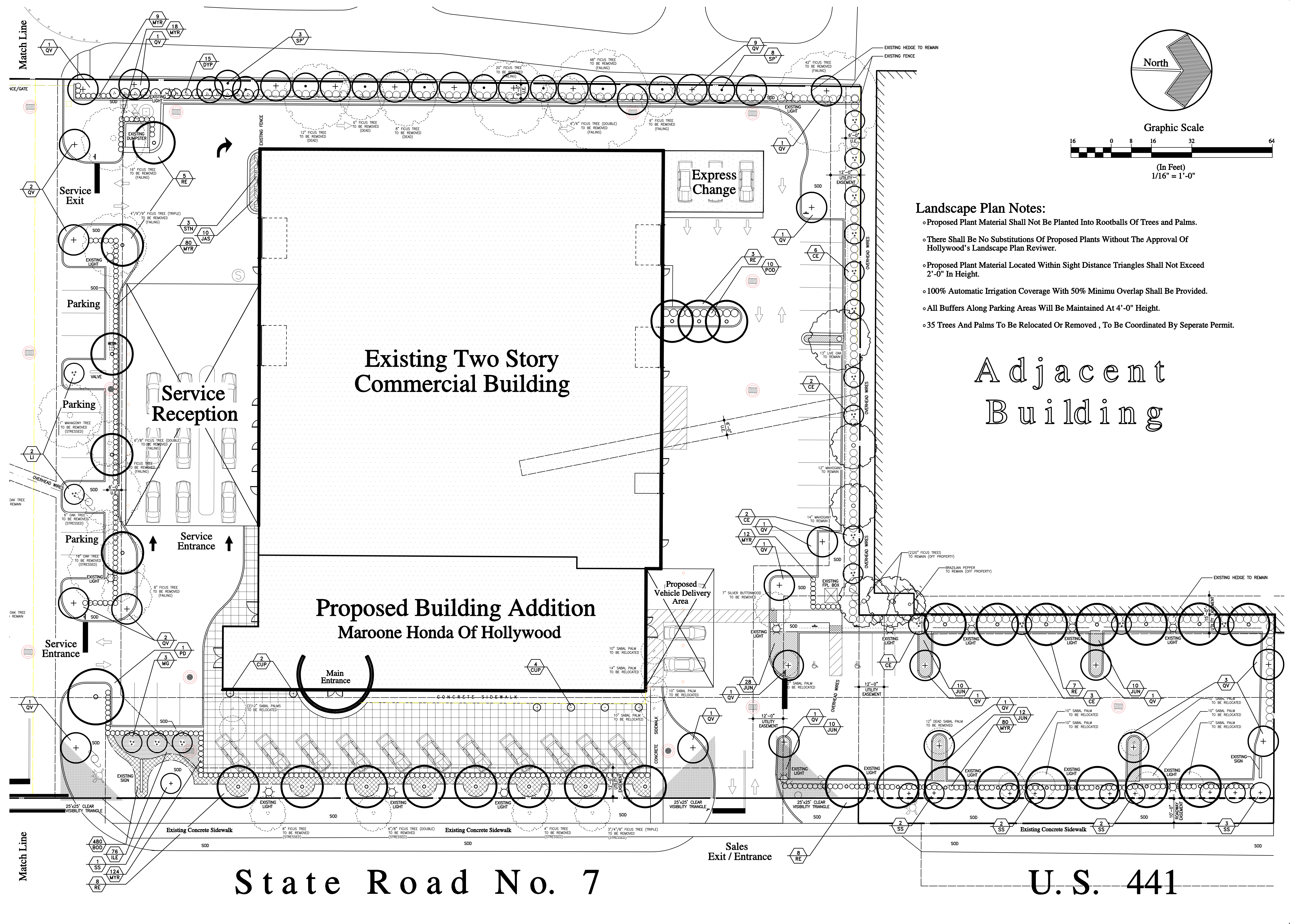


Landscape Plan



**Landscape Plan Notes:**

- Proposed Plant Material Shall Not Be Planted Into Rootballs Of Trees and Palms.
- There Shall Be No Substitutions Of Proposed Plants Without The Approval Of Hollywood's Landscape Plan Reviewer.
- Proposed Plant Material Located Within Sight Distance Triangles Shall Not Exceed 2'-0" In Height.
- 100% Automatic Irrigation Coverage With 50% Minimu Overlap Shall Be Provided.
- All Buffers Along Parking Areas Will Be Maintained At 4'-0" Height.
- 35 Trees And Palms To Be Relocated Or Removed , To Be Coordinated By Separate Permit.

Adjacent Building

Existing Two Story Commercial Building

Proposed Building Addition  
Maroone Honda Of Hollywood

State Road No. 7

U.S. 441

Landscape Architecture  
Site Planning  
**INTUITIVE**  
**IDG**  
DESIGN GROUP  
4247 SW High Meadows Ave.  
Palm City, Florida 34990  
Phone.....772.220.9711  
Fax.....772.781.1040  
Email.....idg@bellsouth.net  
www.intuitivedesigngroup.com

Landscape Plan  
**Maroone Honda Of Hollywood**  
Hollywood, Florida

Date:  
August 3, 2009  
October 19, 2009  
December 2, 2009  
January 6, 2010  
January 22, 2010  
February 3, 2010  
February 24, 2010

Sheet:  
**LP-1**

Of: Three